

TECHNICAL MANUAL

**ORGANIZATIONAL, DIRECT SUPPORT, AND
GENERAL SUPPORT MAINTENANCE REPAIR
PARTS AND SPECIAL TOOLS LIST**

**COMPRESSOR, RECIPROCATING: AIR
HANDTRUCK MOUNTED, GASOLINE
ENGINE DRIVEN 5 CFM, 175 PSI
MELLEY ENERGY SYSTEM, INC.
MODEL IS-7.95-5 CFM
NSN 4310-01-080-5754**

Approved for public release; distribution is unlimited.

*This manual supersedes TM 5-4310-369-24P, 13 May 1981

TECHNICAL MANUAL

No. 5-4310-369-24P

HEADQUARTERS
DEPARTMENT OF THE ARMY
WASHINGTON, D. C., 24 August 1989

**Organizational, Direct Support, and General Support Maintenance
Repair Parts and Special Tools List**

for
**COMPRESSOR, RECIPROCATING: AIR HANDTRUCK MOUNTED,
GASOLINE ENGINE DRIVEN 5 CFM, 175 PSI
MELLEY ENERGY SYSTEM, INC. MODEL IS-7.95-5 CFM
NSN 4310-01-080-5754**

Current as of 10 May 1989

REPORTING ERRORS AND RECOMMENDING IMPROVEMENTS

You can help improve this manual. If you find any mistake or if you know of a way to improve the procedures, please let us know. Mail your letter, DA Form 2028 (Recommended Changes to Publications and Blank Forms), or DA Form 2028-2 located in the back of this manual direct to: Commander, U.S. Army Troop Support Command, ATTN: AMSTR-MCTS, 4300 Goodfellow Boulevard, St. Louis, MO 63120-1798. A reply will be furnished directly to you.

Approved for public release; distribution is unlimited.

TABLE OF CONTENTS

| | Page | Illust/ Figure |
|--------------|--|-------------------|
| Section I. | Introduction | |
| Section II. | Repair Parts List | |
| Group 01 | Fuel System (Tank, Lines, and Filter) | |
| | Fuel Tank Assembly | 1-1 1 |
| | Fuel Strainer Assembly | 2-1 2 |
| | Strainer Assembly Mount | 3-1 3 |
| Group 02 | Compressor Drive | |
| | V-Belt, Guard Covers and Pulley | 4-1 4 |
| Group 03 | Compressor Assembly | |
| | Cylinder, Cylinder Head, Tubing and Connection | 5-1 5 |
| | Reed Head | 6-1 6 |
| | High Pressure | 7-1 7 |
| | Crankshaft and Piston Assembly | 8-1 8 |
| Group 04 | Engine Assembly | 9-1 9 |
| Group 05 | Air Receiver System | |
| | Air Receiver Tank Assembly | 10-1 10 |
| Group 06 | Air Discharge System | 11-1 11 |
| Group 07 | Handtruck Assembly | |
| | Frame Assembly | 12-1 12 |
| | Axle, Wheel and Hub Assembly | 13-1 13 |
| Section III. | Special Tools List (Not Applicable) | |
| Section IV. | Cross Reference Index | I-1 |
| | National Stock Number Index | I-1 |
| | Part Number Index | I-3 |
| | Figure and Item Number Index | I-7 |

*This manual supersedes TM 5-4310-369-24P, 13 May 1981

Organizational, Direct Support, and General Support
Maintenance Repair Parts and Special Tools List

COMPRESSOR, RECIPROCATING: AIR HANDTRUCK MOUNTED,
GASOLINE ENGINE DRIVEN 5 CFM, 175 PSI
MELLEY ENERGY SYSTEM, INC.
MODEL 1S-7.95-5 CFM NSN 4310-01-080-5754

SECTION I. INTRODUCTION

1. **SCOPE.** This RPSTL lists and authorizes spares and repair parts; special tools; special test, measurement, and diagnostic equipment (TMDE); and other special support equipment required for performance of organizational, direct support, and general support maintenance of the Air Compressor. It authorizes the requisitioning, issue, and disposition of spares, repair parts and special tools as indicated by the source, maintenance and recoverability (SMR) codes.

2. **GENERAL.** In addition to this section, Introduction, this Repair Parts and Special Tools List is divided into the following sections:

a. **Section II. Repair Parts List.** A list of spares and repair parts authorized by this RPSTL for use in the performance of maintenance. The list also includes parts which must be removed for replacement of the authorized parts. Parts lists are composed of functional groups in ascending alphanumeric sequence, with the parts in each group listed in ascending figure and item number sequence. Bulk materials are listed in item name sequence. Repair parts kits are listed separately in their own functional group within Section II. Repair parts for repairable special tools are also listed in this section. Items listed are shown on the associated illustration(s)/figure(s).

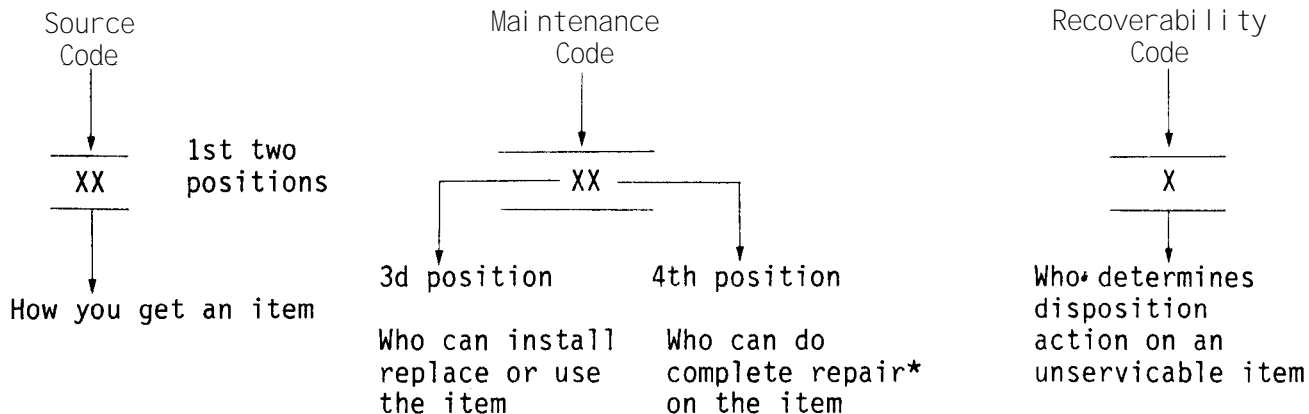
b. **Section III. Special Tools List.** A list of special tools, special TMDE, and other special support equipment authorized by this RPSTL (as indicated by Basis of Issue (BOI) information in DESCRIPTION AND USABLE ON CODE column) for the performance of maintenance.

c. **Section IV. Cross-references Indexes.** A list, in National Item Identification Number (NIIN) sequence, of all National stock numbered items appearing in the listing, followed by a list in alphanumeric sequence of all part numbers appearing in the listings. National stock numbers and part numbers are cross-referenced to each illustration figure and item number appearance. The figure and item number index lists figure and item number in alphanumeric sequence and cross-references NSN, FSCM and part number.

3. **EXPLANATION OF COLUMNS (SECTIONS II AND III).**

a. **ITEM NO. (Column (1)).** Indicates the number used to identify items called out in the illustration.

b. **SMR Code (Column (2)).** The Source, Maintenance, and Recoverability (SMR) code is a 5-position code containing supply/requisitioning information, maintenance category authorization criteria, and disposition instruction, as shown in the following breakout:



*Complete Repair: Maintenance capacity, capability, and authority to perform all corrective maintenance tasks of the "Repair" function in a use/user environment in order to restore serviceability to a failed item.

(1) Source Code. The source code tells you how to get an item needed for maintenance, repair, or overhaul of an end item/equipment. Explanations of source codes follows:

| Code | Explanation |
|--|--|
| PA PB PC** PD PE PF PG | Stocked items; use the applicable NSN to request/requisition items with these source codes. They are authorized to the category indicated by the code entered in the 3d position of the SMR code. **NOTE: Items coded PC are subject to deterioration |
| KD KF KB | Items with these codes are not to be requested/requisitioned individually. They are part of a kit which is authorized to the maintenance category indicated in the 3d position of the SMR code. The complete kit must be requisitioned and applied. |

| Code | Explanation |
|---|--|
| MO--(Made at org. AVUM Level) MF--(Made at DS/ AVUM Level) MH--(Made at GS Level) ML--Made at Specialized Repair Activity (SRA) MD--(Made at Depot) | Items with these codes are not to be requested/requisitioned individually. They must be made from bulk material which is identified by the part number in the DESCRIPTION and USABLE ON CODE (UOC) column and listed in the Bulk Material group of the repair parts list in this RPSTL. If the item is authorized to you by the 3d position code of the SMR code, but the source code indicates it is made at a higher level, order the item from the higher level of maintenance. |

AO--(Assembled by org/AVUM Level)
 AF--(Assembled by DS/AVIM Level)
 AH--(Assembled by GS Category)
 AL--(Assembled by SRA)
 AD--(Assembled by Depot)

Explanation

Items with these codes are not to be requested/requisitioned individually. The parts that make up the assembled item must be requisitioned or fabricated and assembled at the level of maintenance indicated by the source code. If the 3d position code of the SMR code authorizes you to replace the item, but the source code indicates the items are assembled at a higher level, order the item from the higher level of maintenance.

Code

Explanation

- XA--Do not requisition an "XA" - coded item. Order its next higher assembly. (Also, refer to the NOTE below.)
- XB--If an "XB" item is not available from salvage, order it using the FSCM and part number given.
- XC--Installation drawing, diagram, instruction sheet, field service drawing, that is identified by manufacturer's part number.
- XD--Item is not stocked. Order an "XD" - coded item through normal supply channels using the FSCM and part number given, if no NSN is available.

NOTE

Cannibalization or controlled exchange, when authorized, may be used as a source of supply for items with the above source codes, except for those source coded "XA" or those aircraft support items restricted by requirements of AR 750-1.

(2) Maintenance Code. Maintenance codes tells you the level(s) of maintenance authorized to USE and REPAIR support items. The maintenance codes are entered in the third and fourth positions of the SMR code as follows:

(a) The maintenance code entered in the third position tells you the lowest maintenance level authorized to remove, replace, and use an item. The maintenance code entered in the third position will indicate authorization to one of the following levels of maintenance.

Code

Application/Explanation

- C --Crew or operator maintenance done within organizational or aviation unit maintenance.
- O --Organizational or aviation unit category can remove, replace, and use the item.
- F --Direct support or aviation intermediate level can remove, replace, and use the item.

- H --General support level can remove, replace, and use the item.
- L --Specialized repair activity can remove, replace, and use the item.
- D --Depot level can remove, replace, and use the item.

(b) The maintenance code entered in the fourth position tells whether or not the item is to be repaired and identifies the lowest maintenance level with the capability to do complete repair (i. e., perform all authorized repair functions.) NOTE: Some limited repair may be done on the item at a lower level of maintenance, if authorized by the Maintenance Allocation Chart (MAC) and SMR codes. This position will contain one of the following maintenance codes.

| Code | Application/Explanation |
|------|---|
| 0 | --Organizational or (aviation unit) is the lowest level that can do complete repair of the item. |
| F | --Direct support or aviation intermediate is the lowest level that can do complete repair of the item. |
| H | --General Support is the lowest level that can do complete repair of the item. |
| L | --Specialized repair activity is the lowest level that can do complete repair of the item. |
| D | --Depot is the lowest level that can do complete repair of the item. |
| Z | --Nonreparable. No repair is authorized. |
| B | --No repair is authorized. (No parts or special tools are authorized for the maintenance of a "B" coded item). However, the item may be reconditioned by adjusting, lubricating, etc., at the user level. |

(3) **Recoverability Code.** Recoverability codes are assigned to items to indicate the disposition action on unserviceable items. The recoverability code is entered in the fifth position of the SMR Code as follows:

| Recoverability Codes | Application/Explanation |
|----------------------|--|
| Z | --Nonreparable item, When unserviceable, condemn and dispose of the item at the level of maintenance shown in 3d position of SMR Code. |

| Recoverability Codes | Application/Explanation |
|----------------------|--|
| O | --Reparable item. When uneconomically repairable, condemn and dispose of the item at organizational or aviation unit level. |
| F | --Reparable item. When uneconomically repairable, condemn and dispose of the item at the direct support or aviation intermediate level. |
| H | --Reparable item. When uneconomically repairable, condemn and dispose of the item at the general support level. |
| D | --Reparable item. When beyond lower level repair capability, return to depot. Condemnation and disposal of item not authorized below depot level. |
| L | --Reparable item. Condemnation and disposal not authorized below specialized repair activity (SRA). |
| A | --Item requires special handling or condemnation procedures because of specific reasons (e.g., precious metal content, high dollar value, critical material, or hazardous material). Refer to appropriate manual s/directives for specific instructions. |

c. FSCM (Column (3)). The Federal Supply Code for Manufacturer (FSCM) is a 5-digit numeric code which is used to identify the manufacturer, distributor, or Government agency, etc., that supplies the item.

d. PART NUMBER (Column (4)). Indicates the primary number used by the manufacturer, (individual, company, firm, corporation, or Government activity), which controls the design and characteristics of the item by means of its engineering drawings, specifications standards, and inspection requirements to identify an item or range of items.

NOTE

When you use an NSN to requisition an item, the item you receive may have a different part number from the part ordered.

e. DESCRIPTION AND USABLE ON CODE (UOC) (Column (5)). This column includes the following information:

- (1) The Federal item name and, when required, a minimum description to identify the item.
- (2) The physical security classification of the item is indicated by the parenthetical entry, e.g., Phy Sec C1. - Confidential, Phy Sec C1 (S) - Secret, Phy Sec C1 (T) - Top Secret.

- (3) Items that are included in kits and sets are listed below the name of the kit or set.
- (4) Spare/repair parts that make up an assembled item are listed immediately following the assembled item line entry.
- (5) Part numbers for bulk materials are referenced in this column in the line item entry for the item to be manufactured/fabricated.
- (6) When the item is not used with all serial numbers of the same model, the effective serial numbers are shown on the last line(s) of the description (before UOC).
- (7) The usable on code, when applicable (see paragraph 5, Special Information).
- (8) In the Special Tools List section, the basis of issue (BOI) appears as the last line(s) in the entry for each special tool, special TMDE, and other special support equipment. When density of equipments supported exceeds density spread indicated in the basis of issue, the total authorization is increased proportionately.
- (9) The statement "END OF FIGURE" appears just below the last item description in Column 5 for a given figure in both Section II and Section III.
- (10) The indenture, shown as dots appearing before the repair part, indicates that the item is a repair part of the next higher assembly.

f. QTY (Column (6)). The QTY (quantity per figure column) indicates the quantity of the item used in the breakout shown on the illustration figure, which is prepared for a functional group, subfunctional group, or an assembly. A "V" appearing in this column in lieu of a quantity indicates that the quantity is variable and may vary from application to application.

4. EXPLANATION OF COLUMNS (SECTION IV).

a. NATIONAL STOCK NUMBER (NSN) INDEX.

- (1) STOCK NUMBER column. This column lists the NSN by National item identification number

(NIIN) sequence. The NIIN consists of the last nine digits of the NSN, i. e. $\overbrace{(5305-01-574-1467)}^{\text{NSN}}$.
NIIN

When using this column to locate an item, ignore the first 4 digits of the NSN. However, the complete NSN should be used when ordering items by stock number.

- (2) FIG. column. This column lists the number of the figure where the item is identified/located. The figures are in numerical order in Section II and Section III.

(3) **ITEM column.** The item number identifies the item associated with the figure listed in the adjacent **FIG. column.** This item is also identified by the **NSN** listed on the same line.

b. **PART NUMBER INDEX.** Part numbers in this index are listed by part number in ascending alphanumeric sequence (i.e., vertical arrangement of letter and number combination which places the first letter or digit of each group in order A through Z, followed by the numbers 0 through 9 and each following letter or digit in like order).

(1) **FSCM column.** The Federal Supply Code for Manufacturer (FSCM) is a 5-digit numeric code used to identify the manufacturer, distributor, or Government agency, etc., that supplies the item.

(2) **PART NUMBER column.** Indicates the primary number used by the manufacturer (individual, firm, corporation, or Government activity), which controls the design and characteristics of the item by means of its engineering drawings, specifications standards, and inspection requirements to identify an item or range of items.

(3) **STOCK NUMBER column.** This column lists the **NSN** for the associated part number and manufacturer identified in the **PART NUMBER** and **FSCM** columns to the left.

(4) **FIG. column.** This column lists the number of the figure where the item is identified/located in Sections II and III.

(5) **ITEM column.** The item number is that number assigned to the item as it appears in the figure referenced in adjacent figure number column.

c. **FIGURE AND ITEM NUMBER INDEX.**

(1) **FIG. column.** This column lists the number of the figure where the item is identified/located in Section II and III.

(2) **ITEM column.** The item number is that number assigned to the item as it appears in the figure referenced in the adjacent figure number column.

(3) **STOCK NUMBER column.** This column lists the **NSN** for the item.

(4) **FSCM column.** The Federal Supply Code for Manufacturer (FSCM) is a 5-digit numeric code used to identify the manufacturer, distributor, or Government agency, etc., that supplies the item.

(5) **PART NUMBER column.** Indicates the primary number used by the manufacturer (individual, firm, corporation, or Government activity), which controls the design and characteristics of the item by means of its engineering drawings, specifications standards, and inspection requirements to identify an item or range of items.

5. SPECIAL INFORMATION.

a. **USABLE ON CODE.** The usable on code appears in the lower left corner of the Description column heading. Usable on codes are shown as "UOC:" in the Description Column (justified left) on the last line applicable item description/nomenclature. Uncoded items are applicable to all models.

b. **ASSOCIATED PUBLICATIONS.** The publications listed below pertain to the Air Compressor Section and its components.

| Publication | Short Title |
|------------------|-------------------------------------|
| TM 5-4310-369-14 | Compressor, Reciprocating: 17P PSI. |

6. HOW TO LOCATE REPAIR PARTS.

a. When National Stock Number or Part Number is NOT Known.

- (1) First. Using the table of contents, determine the assembly group for subassembly group to which the item belongs. This is necessary since figures are prepared for assembly groups and subassembly groups, and listings are divided into the same groups.
- (2) Second. Find the figure covering the assembly group or subassembly group to which the item belongs.
- (3) Third. Identify the item on the figure and note the item number.
- (4) Fourth. Refer to the Repair Parts List for the figure to find the part number for the item number noted on the figure.
- (5) Fifth. Refer to the Part Number Index to find the NSN, if assigned.

b. When National Stock Number or Part Number is Known:

- (1) First. Using the Index of National Stock Numbers and Part Numbers, find the pertinent National Stock Number or Part Number. The NSN index is in National Item Identification Number (NIIN) sequence (see 4a(1)). The part numbers in the Part Number index are listed in ascending alphanumeric sequence (see paragraph 4b). Both indexes cross-reference you to the illustration figure and item number of the item you are looking for.
- (2) Second. After finding the figure and item number, verify that the item is the one you are looking for, then locate the item number in the repair parts list for the figure.

7. **ABBREVIATIONS.** Abbreviations used in this manual are listed in MIL-STD-12 and additional ones below.

| Abbreviations | Explanation |
|---------------|-------------|
| cd-or | cadmium-ore |
| zn-pltd | zinc-plated |
| MOD | MODEL |
| opn | opening |

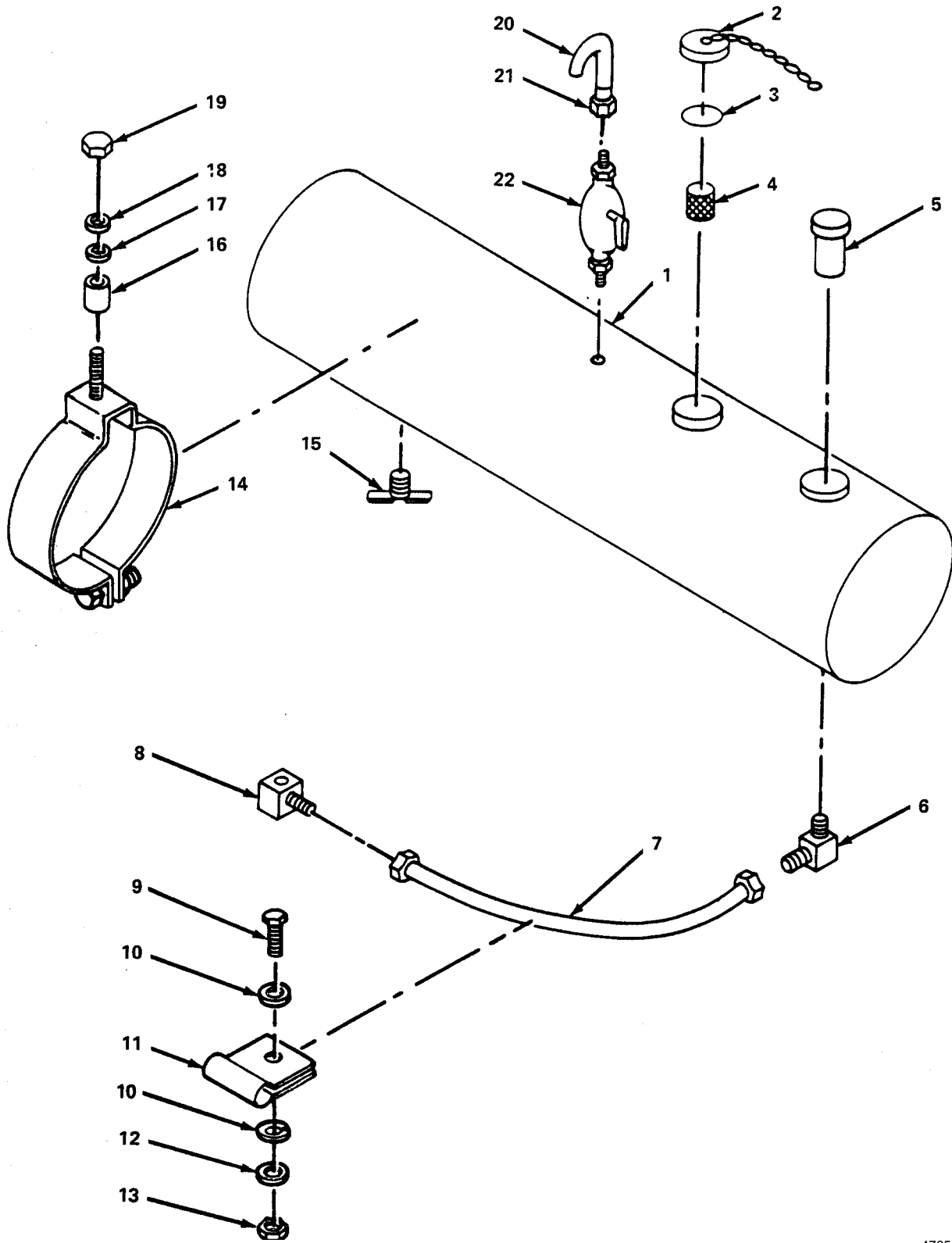


Figure 1. Fuel Tank Assembly.

| SECTION II (1) | ITEM (2) | (3) | TM5-4310-369-24P (4) | (5) | (6) |
|---------------------------|-------------|-------|-------------------------------|---|-----|
| NO | SMR CODE | FSCM | PART NUMBER | DESCRIPTION AND USABLE ON CODE (UOC) | QTY |
| GROUP 01 FUEL SYSTEM TANK | | | | | |
| FIG.1 FUEL TANK ASSEMBLY | | | | | |
| 1 | PBOZZ | 86823 | 43313 | TANK, FUEL, ENGINE | 1 |
| 2 | PAOZZ | 86623 | A21951 | CAP, FILLER OPENING | 1 |
| 3 | PBOZZ | 26759 | 007628 | .GASKET | 1 |
| 4 | PBOZZ | 86823 | T-17-4 | .STRAINER ELEMENT | 1 |
| 5 | XDOZZ | 23224 | MODEL31000 A-4 3 /4 IN.LG. | .GAGE, LIQUID QUANTIT (NOT USED ON REPLACEMENT TANK P/N 43313) | 1 |
| 6 | PAOZZ | 26759 | 7008952 | .ELBOW, PIPE | 1 |
| 7 | PAOZZ | 26759 | 7008776 | .HOSE ASSY, FUEL 17LG | 1 |
| 8 | PAOZZ | 79470 | 50X4 | .ELBOW, PIPE TO TUBE | 1 |
| 9 | PAOZZ | 96906 | MS90725-10 | .SCREW, CAP, HEXAGON | 6 |
| 10 | PAOZZ | 96906 | MS27183-10 | .WASHER, FLAT | 2 |
| 11 | PAOZZ | 26759 | 101192 | .CLAMP, LOOP | 1 |
| 12 | PAOZZ | 96906 | MS35338-44 | .WASHER, LOCK | 12 |
| 13 | PAOZZ | 96906 | MS51967-3 | .NUT, PLAIN, HEXAGON | 8 |
| 14 | XDOZZ | 26759 | 7008927 | .CLAMP ASSY | 2 |
| 15 | PBOZZ | 96906 | MS35782-4 | .COCK, DRAIN | 1 |
| 16 | XBOZZ | 26759 | 101224 | .SPACER, PIPE | 2 |
| 17 | PAOZZ | 96906 | MS27183-13 | .WASHER, FLAT | 2 |
| 18 | PAOZZ | 96906 | MS35338-46 | .WASHER, LOCK | 2 |
| 19 | PAOZZ | 96906 | MS51967-9 | .NUT, PLAIN, HEXAGON | 8 |
| 20 | XBOZZ | 26759 | 101223 | TUBE, VENT (NOT USED ON REPLACEMENT TANK P/N 43313) | 1 |
| 21 | PAOZZ | 79470 | 1110X4 | NUT, TUBE COUPLING (NOT USED ON REPLACEMENT TANK P/N 43313) | 1 |
| 22 | PAFZZ | 79470 | 537 | COCK, PLUG (NOT USED ON REPLACEMENT TANK P/N 43313) | 1 |

END OF FIGURE

1
2 THRU 7

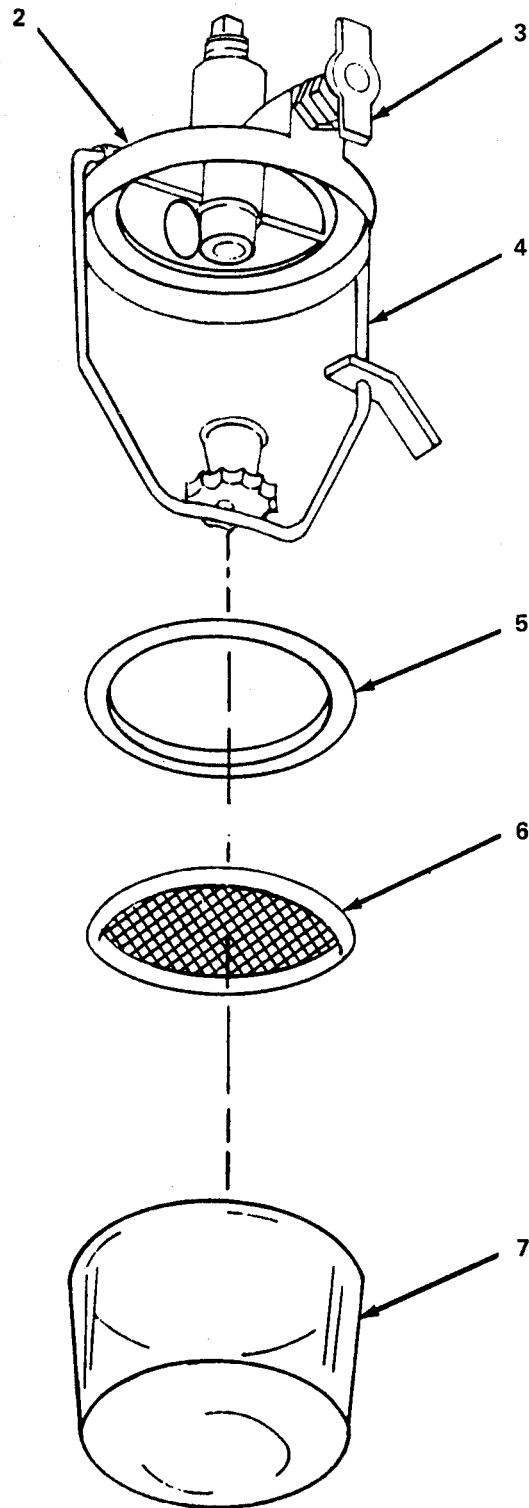


Figure 2. Fuel Strainer Assembly.

| SECTION II | | | | TM5-4310-369-24P | |
|-------------------------------|----------|-------|-------------|--------------------------------------|-----|
| (1) | (2) | (3) | (4) | (5) | (6) |
| ITEM NO | SMR CODE | FSCM | PART NUMBER | DESCRIPTION AND USABLE ON CODE (UOC) | QTY |
| GROUP 01 FUEL TANK ASSEMBLY | | | | | |
| FIG. 2 FUEL STRAINER ASSEMBLY | | | | | |
| 1 | PAOZZ | 96906 | MS51086-1 | STRAINER, SEDIMENT | 1 |
| 2 | XAOZZ | 70040 | 854078 | .WASHER, LOCK | 1 |
| 3 | XAOZZ | 80463 | 100-7 | .VALVE, FUEL SHUT-OFF | 1 |
| 4 | XAOZZ | 70040 | 854254 | .BALL ASSY, STRAINER | 1 |
| 5 | PAOZZ | 70040 | 854389 | .GASKET | 1 |
| 6 | XAOZZ | 80463 | 854187 | .STRAINER, FUEL | 1 |
| 7 | XAOZZ | 70040 | 1522092 | .BOWL, SEDIMENT | 1 |
| END OF FIGURE | | | | | |

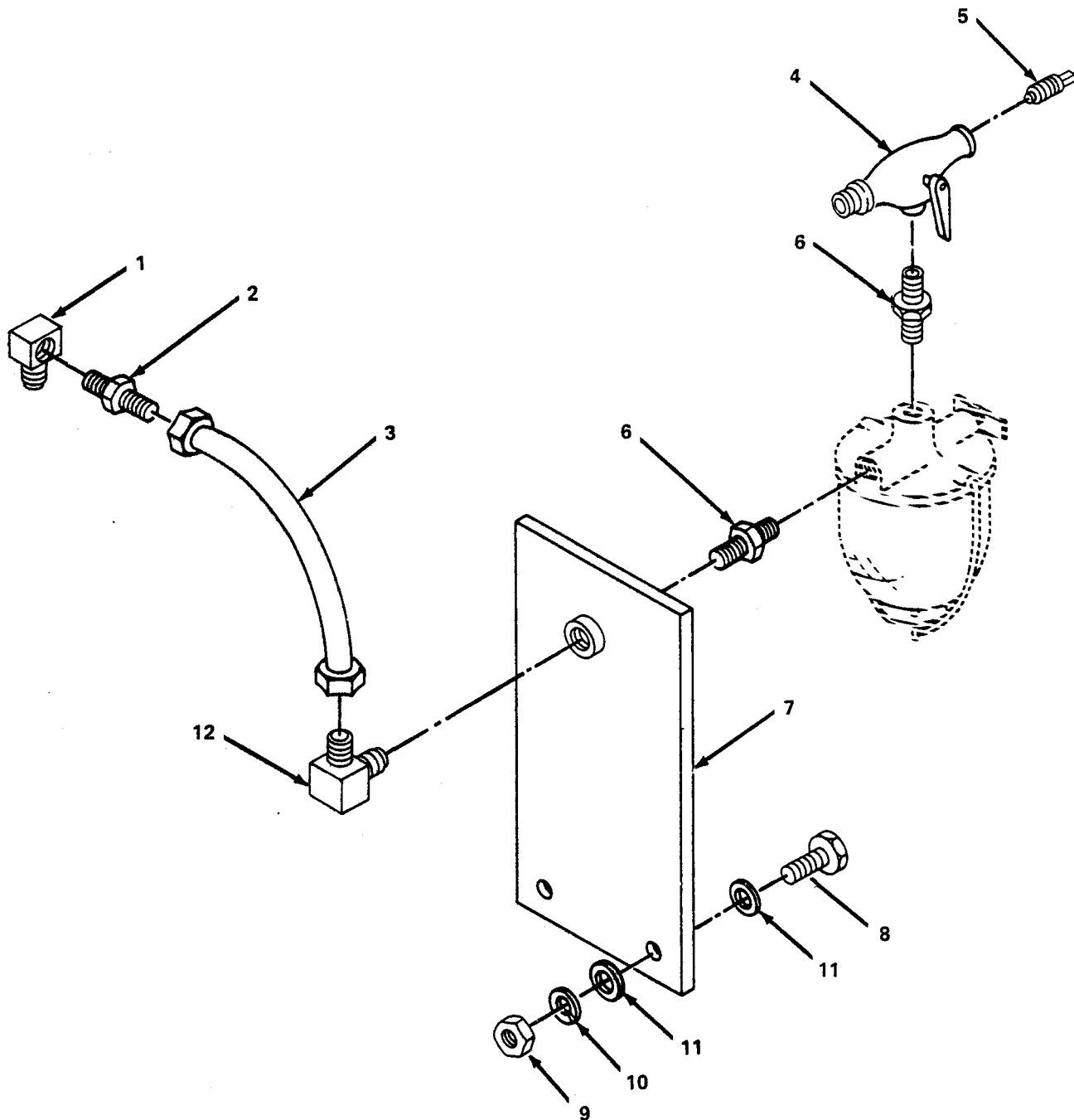


Figure 3. Strainer Assembly Mount.

| SECTION II | | | | | |
|------------|----------|-------|-------------|--------------------------------------|-----|
| (1) | (2) | (3) | (4) | (5) | (6) |
| ITEM NO | SMR CODE | FSCM | PART NUMBER | DESCRIPTION AND USABLE ON CODE (UOC) | QTY |
| | | | | TM5-4310-369-24P | |
| | | | | GROUP 01 FUEL TANK ASSEMBLY | |
| | | | | FIG. 3 STRAINER ASSEMBLY MOUNT | |
| 1 | PAOZZ | 14351 | X5162 | ELBOW, PIPE | 1 |
| 2 | PAOZZ | 79470 | 48X4 | CONNECTOR, MALE | 1 |
| 3 | PAOZZ | 26759 | 7008777 | HOSE ASSY, FUEL | 1 |
| 4 | XDOZZ | 26759 | 100881 | VALVE, 3-WAY | 1 |
| 5 | PAOZZ | 91340 | MP200-24 | PLUG, PIPE | 1 |
| 6 | PAOZZ | 26759 | 101191 | NIPPLE, PIPE | 1 |
| 7 | XBOZZ | 26759 | 7008779 | BRACKET | 1 |
| 8 | PAOZZ | 96906 | MS90728-7 | SCREW, CAP, HEXAGON | 1 |
| 9 | PAOZZ | 96906 | MS51967-3 | NUT, PLAIN, HEXAGON | 2 |
| 10 | PAOZZ | 96906 | MS35338-44 | WASHER, LOCK | 2 |
| 11 | PAOZZ | 96906 | MS27183-10 | WASHER, FLAT | 4 |
| 12 | XDOZZ | 01276 | 2003-2-4B | ELBOW, 90 1/8 NPT | 2 |
| | | | | END OF FIGURE | |

1
2 THRU 13

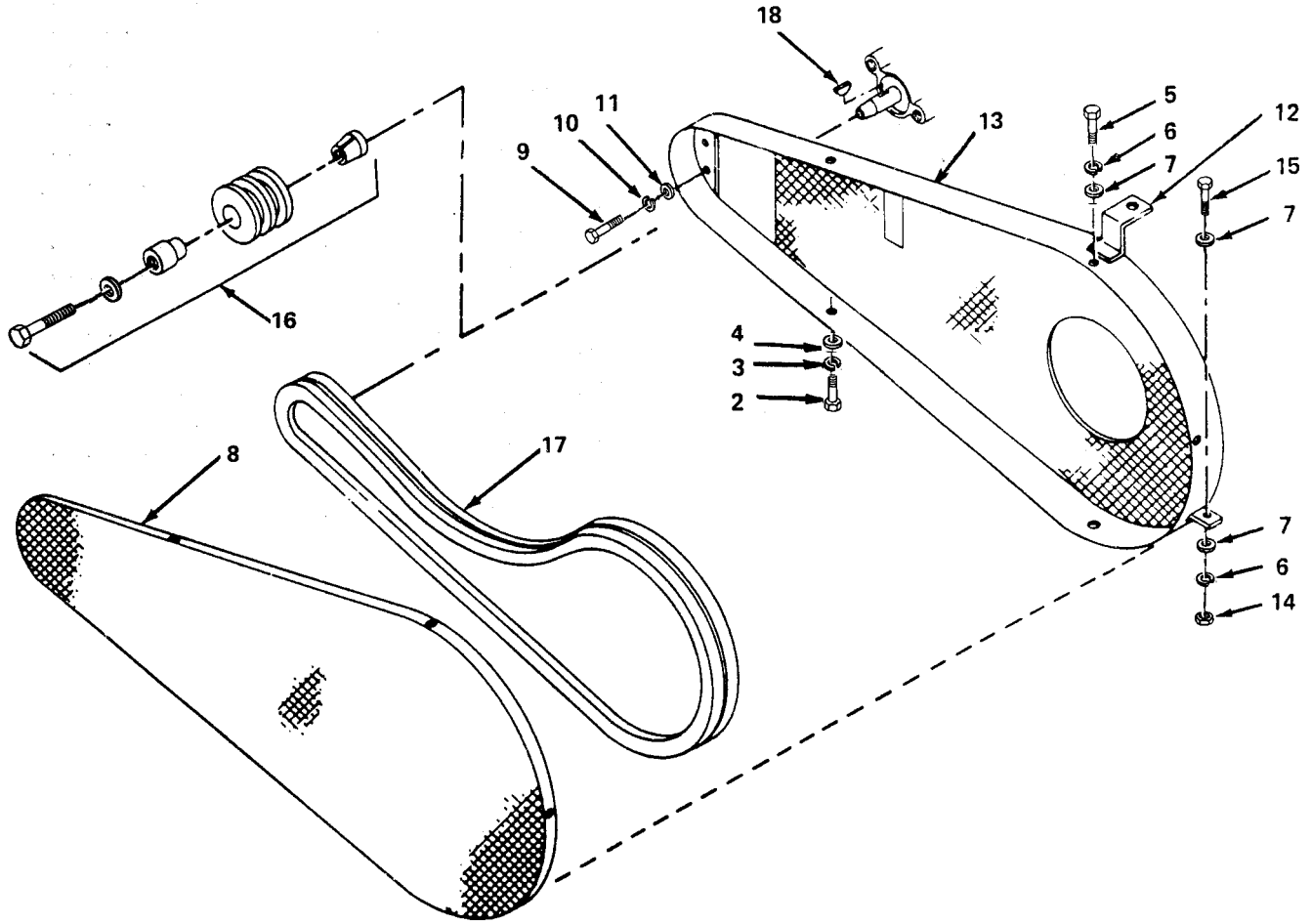


Figure 4. V-Belt, Guard Covers and Pulley.

| SECTION II | | | TM5-4310-369-24P | | |
|--|----------|-------|------------------|--------------------------------------|-----|
| (1) | (2) | (3) | (4) | (5) | (6) |
| ITEM NO | SMR CODE | FSCM | PART NUMBER | DESCRIPTION AND USABLE ON CODE (UOC) | QTY |
| GROUP 02 COMPRESSOR DRIVE | | | | | |
| FIG. 4 V-BELT, GUARD COVERS AND PULLEY | | | | | |
| 1 | PAOOO | 97403 | 13227E8841 | GUARD,MECHANICAL DR | 1 |
| 2 | PAOZZ | 96906 | MS35207-261 | .SCREW,MACHINE | 5 |
| 3 | PAOZZ | 96906 | MS35338-43 | .WASHER,LOCK | 5 |
| 4 | PAOZZ | 96906 | MS27183-8 | .WASHER,FLAT | 5 |
| 5 | PAOZZ | 96906 | MS90728-8 | .SCREW,CAP,HEXAGON | 1 |
| 6 | PAOZZ | 96906 | MS35338-44 | .WASHER,LOCK | 2 |
| 7 | PAOZZ | 96906 | MS27183-10 | .WASHER,FLAT | 1 |
| 8 | XAOZZ | 97403 | 13227E8838 | .COVER,FRONT | 1 |
| 9 | PAOZZ | 96906 | MS90728-32 | .BOLT,MACHINE | 2 |
| 10 | PAOZZ | 96906 | MS27183-12 | .WASHER,FLAT | 2 |
| 11 | PAOZZ | 96906 | MS35338-45 | .WASHER,LOCK | 2 |
| 12 | PAOZZ | 97403 | 13227E8837 | .BRACKET,ANGLE | 1 |
| 13 | XAOZZ | 97403 | 13227E8839 | .COVER,REAR | 1 |
| 14 | PAOZZ | 96906 | MS35649-2252 | NUT,PLAIN,HEXAGON | 1 |
| 15 | PAOZZ | 96906 | MS90728-32 | BOLT,MACHINE | 2 |
| 16 | PBOZZ | 26759 | 7007658 | PULLEY,AND BUSHING | 1 |
| 17 | PAOZZ | 81348 | ZZ-B-190/2C62B2R | BELTS,V,MATCHED SET | 1 |
| 18 | XBOZZ | 26759 | 100795 | KEY,WOODRUFF | 1 |
| END OF FIGURE | | | | | |

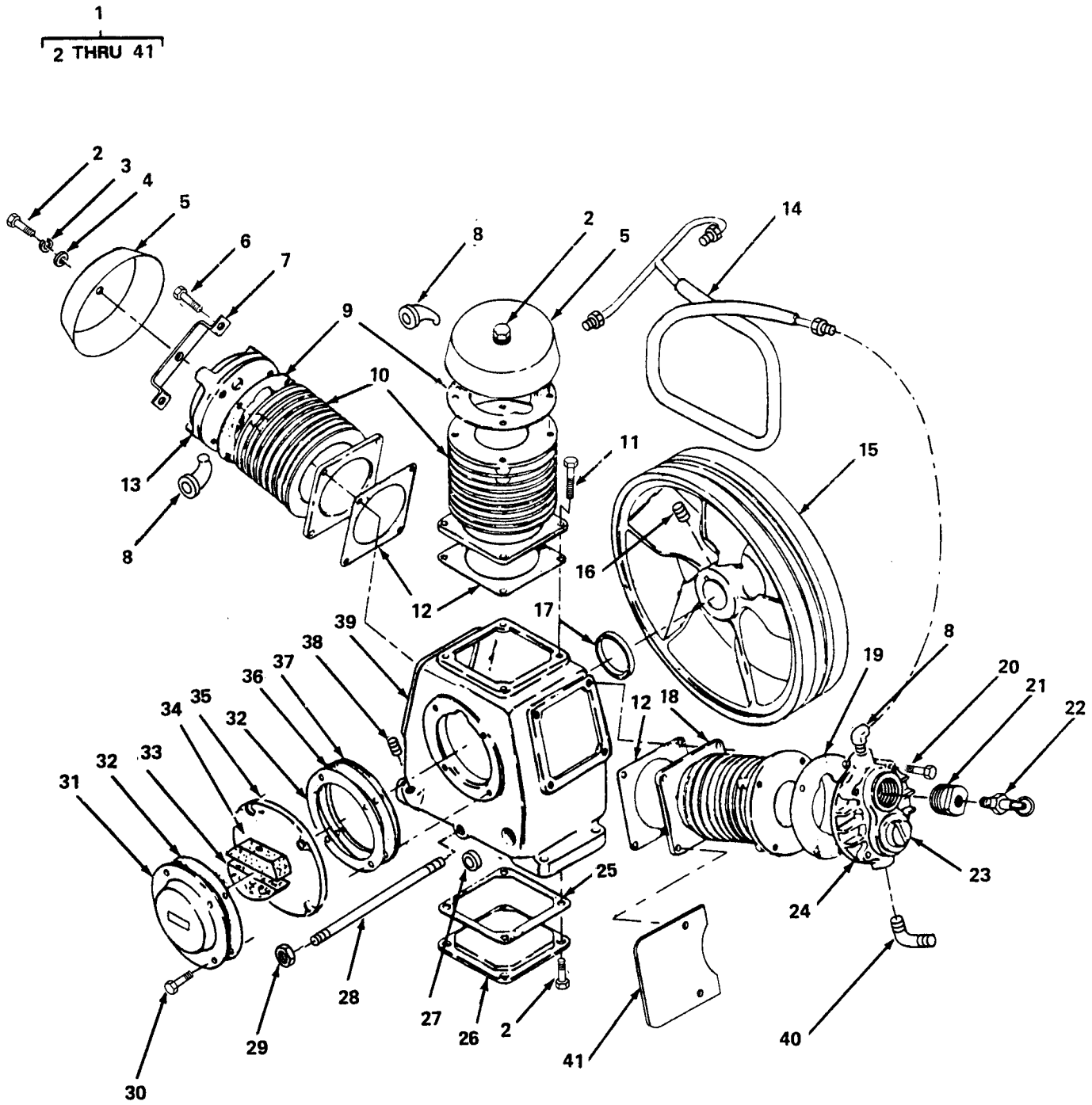


Figure 5. Cylinder, Cylinder head, Tubing and Connections.

| SECTION II (1) ITEM NO | (2) SMR CODE | (3) FSCM | TM5-4310-369-24P (4) PART NUMBER | (5) DESCRIPTION AND USABLE ON CODE (UOC) | (6) QTY |
|---|--------------------|-------------|---|--|------------|
| GROUP 03 COMPRESSOR ASSEMBLY | | | | | |
| FIG. 5 CYLINDER, CYLINDER HEAD, TUBING AND CONNECTIONS | | | | | |
| 1 | XDOFO | 11568 | CAW-1 | COMPRESSOR, RECIPROC | 1 |
| 2 | PAOZZ | 96906 | MS90728-3 | .SCREW, CAP, HEXAGON | 4 |
| 3 | PAOZZ | 96906 | MS35338-44 | .WASHER, LOCK | 1 |
| 4 | PAOZZ | 96906 | MS27183-10 | WASHER, FLAT | 2 |
| 5 | XBOZZ | 19099 | 7008921 | .RAIN CAP | 2 |
| 6 | PAOZZ | 96906 | MS90728-39 | .BOLT, MACHINE | 8 |
| 7 | XBCZZ | 26759 | 7008919 | .BRACKET | 2 |
| 8 | XDOZZ | 11568 | Z-515 | .FITTING, COMPRESSION | 3 |
| 9 | PAOZZ | 11568 | B-31 | .GASKET | 2 |
| 10 | XDFFH | 11568 | A-6A | .CYLINDER, LOW PRESS | 2 |
| 11 | PAOZZ | 96906 | MS90728-32 | .BOLT, MACHINE | 2 |
| 12 | PAOZZ | 11658 | A-29 | .GASKET | 3 |
| 13 | PBOZZ | 11568 | M-1561 | .CYLINDER HEAD, COMPR | 2 |
| 14 | PBOZZ | 11568 | A-12A | .MANIFOLD, FLUID COOL | 1 |
| 15 | XBOZZ | 11568 | NR-4-7A | .FLYWHEEL | 1 |
| 16 | XBOZZ | 11568 | M-568 | .SCREW, SOCKET HD | 1 |
| 17 | PAFZZ | 11568 | OS-A5A | .SEAL, PLAIN ENCASED | 1 |
| 18 | XDFFH | 11568 | C-6B | .CYLINDER, HIGH PRESS | 1 |
| 19 | PAOZZ | 11568 | C31 | .GASKET | 1 |
| 20 | PAOZZ | 96906 | MS90728-36 | .BOLT, MACHINE | 4 |
| 21 | XBOZZ | 11568 | C-28B | .CAP, VALVE CHAMBER | 1 |
| 22 | PAOZZ | 11568 | P-5269A | .VALVE, SAFETY RELIEF | 1 |
| 23 | XBOZZ | 11568 | B-28B | .CAP, VALVE CHAMBER | 1 |
| 24 | PBOZZ | 11568 | C-1 | .CYLINDER HEAD, COMPR | 1 |
| 25 | PAOZZ | 11568 | A-33 | .GASKET | 1 |
| 26 | XBOZZ | 11568 | A-15 | .COVER, ACCESS | 1 |
| 27 | XBOZZ | 11568 | B-14 | .INDICATOR, SIGHT, LIQ | 1 |
| 28 | PAOZZ | 96906 | MS51953-63B | .NIPPLE, PIPE COMPRESSOR OIL DRAIN ; 3/8 IN. NPT X 6 IN. LG. BLACK IRON | 1 |
| 29 | XBCZZ | 11568 | M-461 | .CAP, OIL DRAIN 3/8 | 1 |
| 30 | XDOZZ | 96906 | MS90728-6 | .SCREW, CAP, HEXAGON | 4 |
| 31 | XBOZZ | 11568 | A-100 | .BREATHER CHAMBER | 1 |
| 32 | PAOZZ | 11568 | C-30 | .GASKET | 2 |
| 33 | XDOZZ | 11568 | P-4582A | .FILTER ELEMENT, INTA | 1 |
| 34 | PAOZZ | 11568 | P-4581A | .FILTER ELEMENT, INTA | 1 |
| 35 | XBOZZ | 11568 | C-14C | .COVER, CRANKCASE | 1 |
| 36 | XBFZZ | 11568 | C-30A | .GASKET | V |
| 37 | XBFZZ | 11568 | C-30B | .GASKET | V |
| 38 | XAOFZ | 11568 | M-1796 | .PLUG, PIPE | 1 |
| 39 | XBFFF | 11568 | B-9 | .CRANKCASE | 1 |
| 40 | PAOZZ | 96906 | MS39162-7 | ELBOW, PIPE TO TUBE | 1 |
| 41 | XBOZZ | 26759 | 7009045 | .PLATE, COMPRESSOR, | 1 |

END OF FIGURE

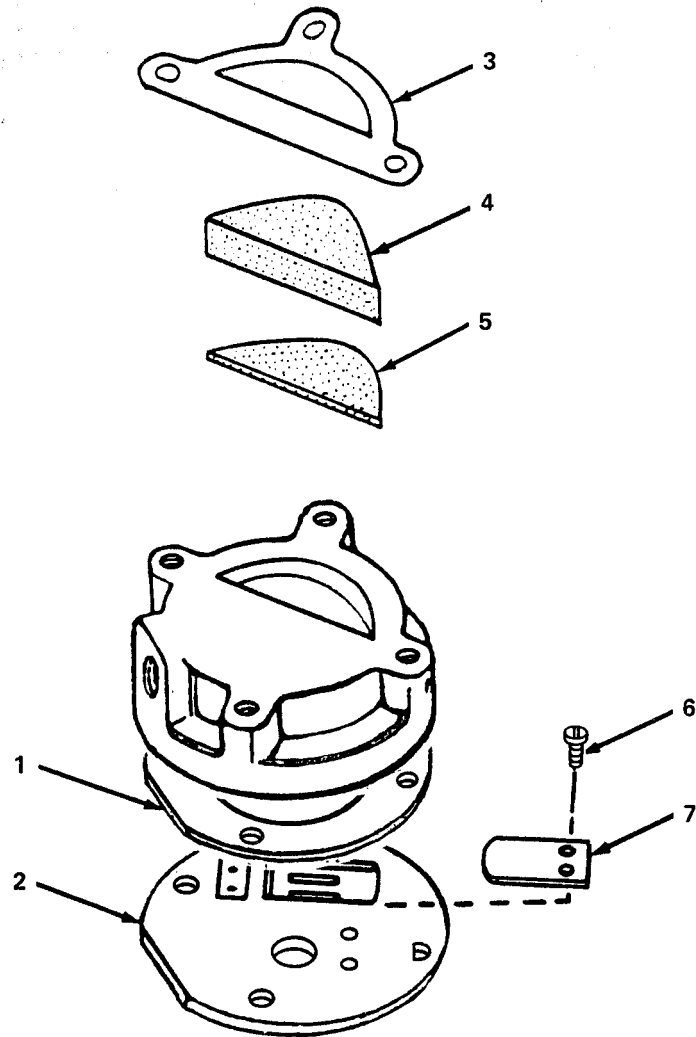


Figure 6. Reed Head.

| SECTION II | | | | | |
|------------------------------|----------|-------|-------------|--------------------------------------|-----|
| (1) | (2) | (3) | (4) | (5) | (6) |
| ITEM NO | SMR CODE | FSCM | PART NUMBER | DESCRIPTION AND USABLE ON CODE (UOC) | QTY |
| TM5-4310-369-24P | | | | | |
| GROUP 03 COMPRESSOR ASSEMBLY | | | | | |
| FIG. 6 REED HEAD | | | | | |
| 1 | PAOZZ | 11568 | M-1564 | .GASKET | 2 |
| 2 | PAOZZ | 11568 | M-1562 | .PLATE, REED VALVE | 2 |
| 3 | XBOZZ | 11568 | P-3703A | .RETAINER L.P | 2 |
| 4 | PAOZZ | 11568 | M-1586 | .FILTER ELEMENT, INTA | 2 |
| 5 | PAOZZ | 11568 | M-1587 | .PAD, INTAKE, COMPRESS | 2 |
| 6 | PAOZZ | 11568 | M-1565 | .SCREW | 8 |
| 7 | PAOZZ | 11568 | M-1563 | .FLAPPER, MAGNETIC, VA | 4 |
| END OF FIGURE | | | | | |

3
4 THRU 8 11
4, 6, 7, 12, 13

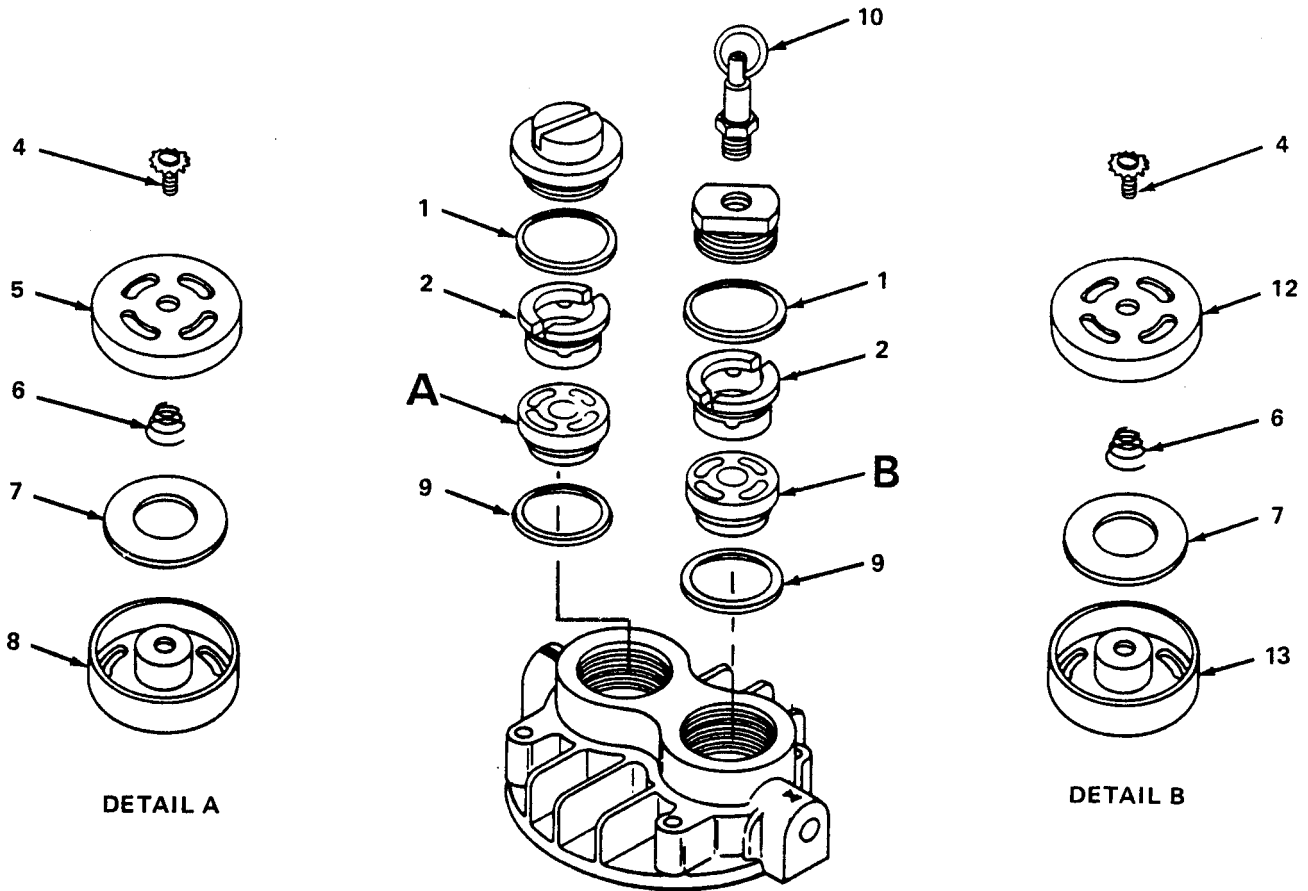


Figure 7. High Pressure Head.

| SECTION II | | | | TM5-4310-369-24P | |
|------------------------------|----------|-------|-------------|--------------------------------------|-----|
| (1) | (2) | (3) | (4) | (5) | (6) |
| ITEM NO | SMR CODE | FSCM | PART NUMBER | DESCRIPTION AND USABLE ON CODE (UOC) | QTY |
| GROUP 03 COMPRESSOR ASSEMBLY | | | | | |
| FIG. 7 HIGH PRESSURE HEAD | | | | | |
| 1 | PAOZZ | 11568 | B-75 | .GASKET,CHAMBER CAP | 2 |
| 2 | XBOZZ | 11568 | B-26A | .RETAINER,VALVE | 2 |
| 3 | PAOZZ | 11568 | Z-122A | .EXHAUST VALVE ASSY | 1 |
| 4 | PAOZZ | 11568 | U-81 | .SCREW,ASSEMBLED | 2 |
| 5 | XAOFF | 11568 | U-68A | .SEAT,VALVE,EXHAUST | 1 |
| 6 | XAOZZ | 11568 | U-71 | .SPRING,VALVE | 2 |
| 7 | XAOZZ | 11568 | U-70A | .DISC,VALVE | 2 |
| 8 | XAOZZ | 11568 | U-69A | .CAGE,VALVE EXHAUST | 1 |
| 9 | PAOZZ | 11568 | U-48 | .GASKET,VALVE | 2 |
| 10 | XBOZZ | 26759 | 101307 | .SLEEVE,LOCKOUT | 1 |
| 11 | PAOZZ | 11568 | Z-121A | .INTAKE VALVE ASSY | 1 |
| 12 | XAOZZ | 11568 | U-66A | .SEAT,VALVE,INTAKE | 1 |
| 13 | XAOZZ | 11568 | U-67A | .CAGE,VALVE,INTAKE | 1 |
| END OF FIGURE | | | | | |

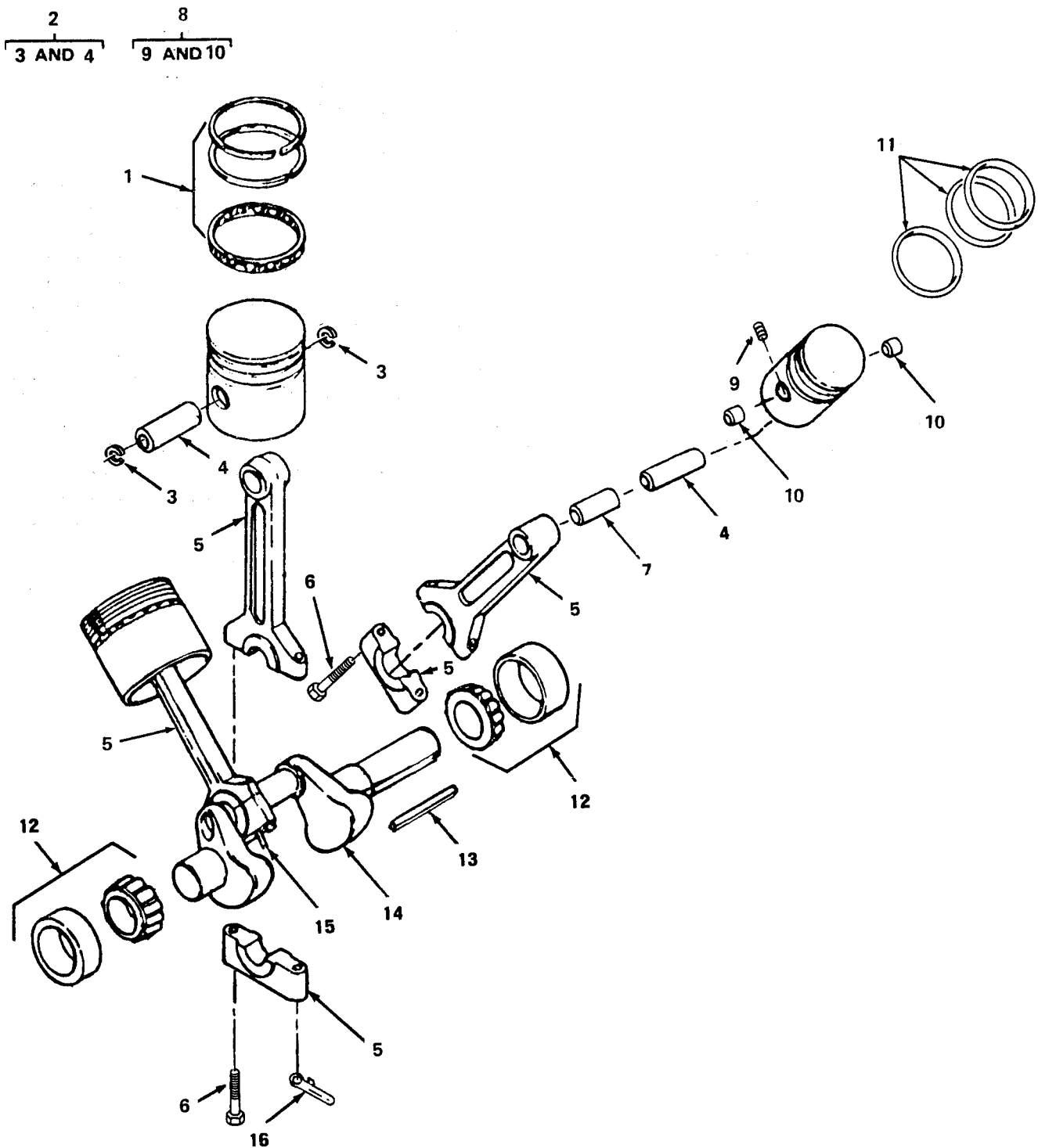


Figure 8. Crankshaft and Piston Assembly.

| SECTION II | | TM5-4310-369-24P | | | |
|---------------------------------------|----------|------------------|-------------|--------------------------------------|-----|
| (1) | (2) | (3) | (4) | (5) | (6) |
| ITEM NO | SMR CODE | FSCM | PART NUMBER | DESCRIPTION AND USABLE ON CODE (UOC) | QTY |
| GROUP 03 COMPRESSOR ASSEMBLY | | | | | |
| FIG. 8 CRANKSHAFT AND PISTON ASSEMBLY | | | | | |
| 1 | PAFZZ | 11568 | ZA-10 | .RING,PISTON LP SET | 2 |
| 2 | XDFZZ | 11568 | A-4A | PISTON,COMPRESSOR | 2 |
| 3 | XBFZZ | 11568 | A-102 | .RING,RETAINING | 4 |
| 4 | XBFZZ | 11568 | A-21 | .PIN,PISTON | 2 |
| 5 | PBFZZ | 11568 | P-5031B | .ROD,CONNECTING | 3 |
| 6 | PAOZZ | 96906 | MS90728-12 | .SCREW,CAP,HEXAGON | 6 |
| 7 | XAFZZ | 11568 | P-5172A | .BUSHING,SLEEVE | 1 |
| 8 | XDFZZ | 11568 | Z-1098 | .PISTON,COMPRESSOR | 1 |
| 9 | XBFZZ | 11568 | M-2236 | .SCREW,SET | 2 |
| 10 | XBFZZ | 11568 | P-5171A | .BUSHING,PISTON | 2 |
| 11 | PAFZZ | 11568 | ZC-10 | .RING SET,PISTON | 1 |
| 12 | PAFZZ | 11568 | ZC-16 | .MAIN BEARING ASSY | 2 |
| 13 | PAOZZ | 96906 | MS29966-256 | .KEY,MACHINE | 1 |
| 14 | XBFZZ | 11568 | C-5 | .CRANKSHAFT,COMPRESS | 1 |
| 15 | XBFZZ | 11568 | P-5086A | .DIPPER,OIL | 1 |
| 16 | XBFZZ | 11568 | P-5087A | .DIPPER,OIL,PADDLE | 1 |
| END OF FIGURE | | | | | |

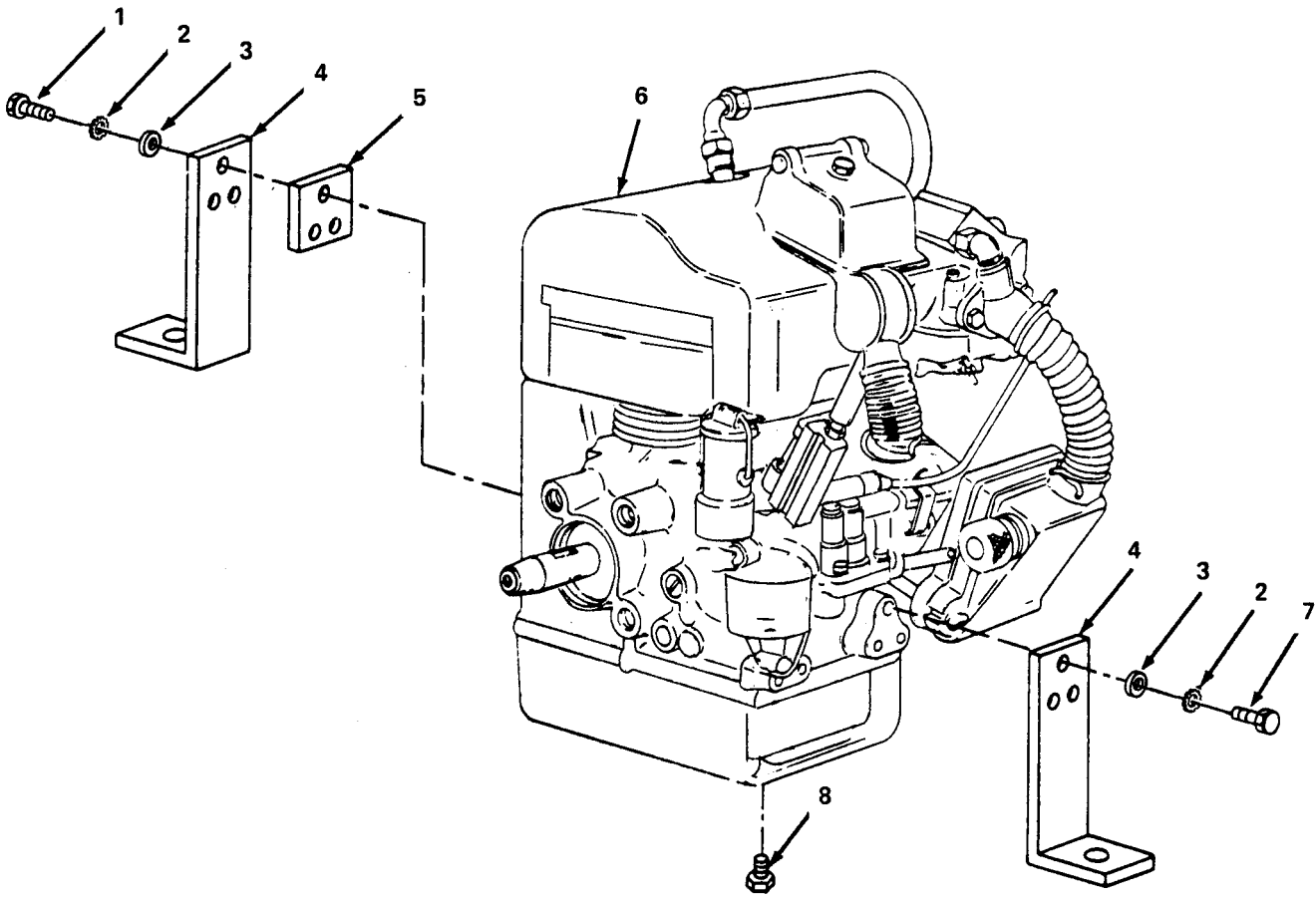


Figure 9. Engine Assembly.

| SECTION II | | | | | |
|------------|----------|-------|-------------|--------------------------------------|-----|
| (1) | (2) | (3) | (4) | (5) | (6) |
| ITEM NO | SMR CODE | FSCM | PART NUMBER | DESCRIPTION AND USABLE ON CODE (UOC) | QTY |
| | | | | TM5-4310-369-24P | |
| | | | | GROUP 04 ENGINE ASSEMBLY | |
| | | | | FIG. 9 ENGINE ASSEMBLY | |
| 1 | PAOZZ | 96906 | MS90725-10 | .SCREW,CAP,HEXAGON | 1 |
| 2 | PAOZZ | 96906 | MS35338-44 | .WASHER,LOCK | 2 |
| 3 | PAOZZ | 96906 | MS27183-10 | .WASHER,FLAT | 2 |
| 4 | XBOZZ | 26759 | 7007776 | .BRACKET,ENG.MTG | 4 |
| 5 | XBOZZ | 26759 | 7007772 | .SPACER,ENG.MTG | 2 |
| 6 | PDOFH | 97403 | 9786E3MARK3 | .ENGINE,GASOLINE | 1 |
| 7 | PAOZZ | 96906 | MS99728-7 | .SCREW,CAP,HEXAGON | 2 |
| 8 | PAOZZ | 97403 | 9786E88 | .PLUG | 1 |
| | | | | END OF FIGURE | |

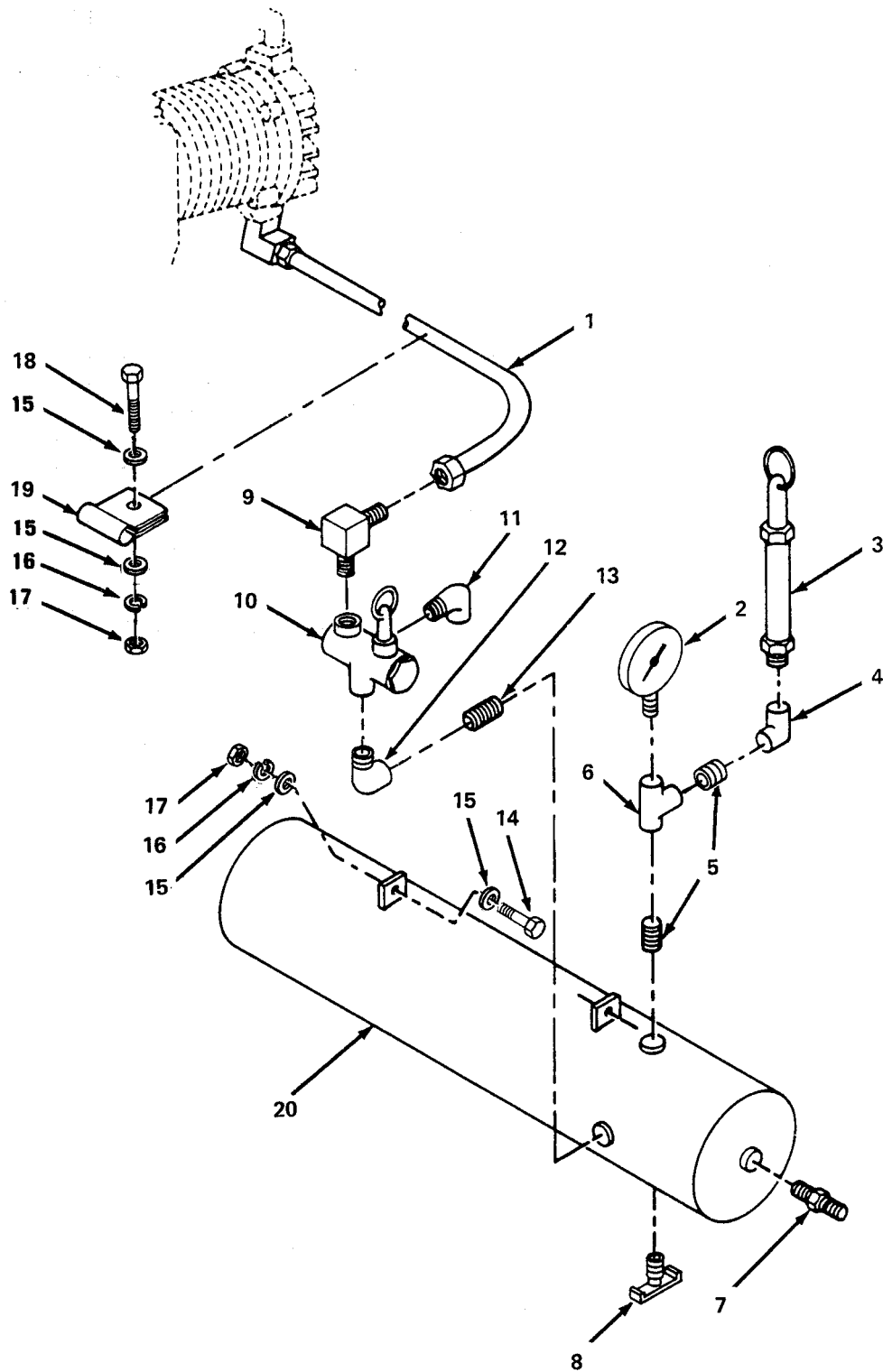


Figure 10. Air Receiver Tank Assembly.

| SECTION II (1) | SMR (2) | FSCM (3) | TM5-4310-369-24P (4) PART NUMBER | (5) DESCRIPTION AND USABLE ON CODE (UOC) | (6) QTY |
|------------------------------------|------------|-------------|---|---|------------|
| GROUP 05 AIR RECIEVER SYSTEM | | | | | |
| FIG. 10 AIR RECEIVER TANK ASSEMBLY | | | | | |
| 1 | PAOZZ | 26759 | 7008778 | .HOSE ASSY,AIR | 1 |
| 2 | PAOZZ | 61349 | P500 1/4LM2IN-30 0 PSI | GAGE,PRESSURE,DIAL | 1 |
| 3 | PBOZZ | 34494 | 48A1-4SET200 | .VALVE,SAFETY RELIEF | 1 |
| 4 | PAOZZ | 26759 | 100652A | .ELBOW,PIPE | 1 |
| 5 | PAOZZ | 96906 | MS51953-25B | NIPPLE,PIPE | 2 |
| 6 | PAOZZ | 26759 | 100651A | .TEE,PIPE | 1 |
| 7 | PAOZZ | 26759 | 100807 | .ADAPTER,MALE | 1 |
| 8 | PAOZZ | 96906 | MS35782-4 | .COCK,DRAIN | 1 |
| 9 | PAOZZ | 79470 | 49X8X8 | ELBOW,PIPE TO TUBE | 1 |
| 10 | PAOZZ | 58818 | LGM-20 | VALVE,REGULATING | 1 |
| 11 | PAOZZ | 26759 | 101232 | .ELBOW,PIPE TO TUBE | 1 |
| 12 | PAOZZ | 26759 | 101295-4 | .ELBOW,PIPE | 1 |
| 13 | PAOZZ | 26759 | 100800 | .NIPPLE,PIPE | 1 |
| 14 | PAOZZ | 96906 | MS90728-7 | SCREW,CAP,HEXAGON | 1 |
| 15 | PAOZZ | 96906 | MS27183-10 | .WASHER,FLAT | 2 |
| 16 | PAOZZ | 96906 | MS35388-44 | .WASHER LOCK | 2 |
| 17 | PAOZZ | 96906 | MS51967-3 | .NUT,PLAIN,HEXAGON | 1 |
| 18 | PAOZZ | 96906 | MS90725-10 | SCREW,CAP,HEXAGON | 6 |
| 19 | PAOZZ | 01276 | 900729-6 | .CLAMP,LOOP | 1 |
| 20 | XBOZZ | 26759 | 7007777 | .AIR RECEIVER | 1 |
| END OF FIGURE | | | | | |

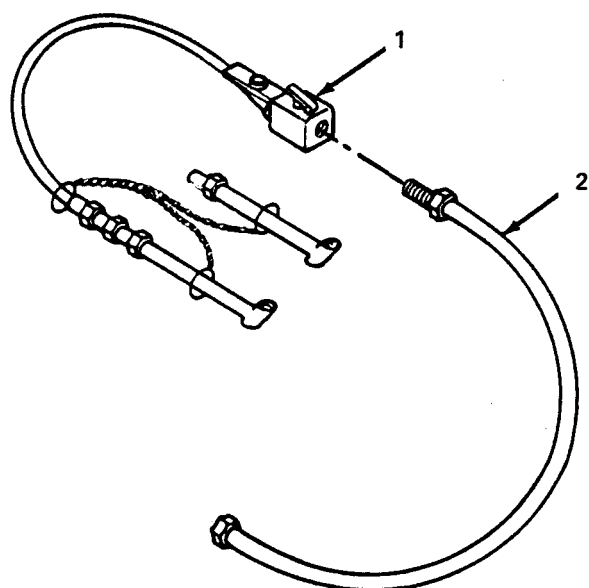


Figure 11. Air Discharge System.

| SECTION II | | | | | |
|------------|----------|-------|-------------|--------------------------------------|-----|
| (1) | (2) | (3) | (4) | (5) | (6) |
| ITEM NO | SMR CODE | FSCM | PART NUMBER | DESCRIPTION AND USABLE ON CODE (UOC) | QTY |
| | | | | GROUP 06 AIR DISCHARGE SYSTEM | |
| | | | | FIG. 11 AIR DISCHARGE SYSTEM | |
| 1 | PAOZZ | 26759 | 100780 | .INFLATOR-GAGE,PNEUM | 1 |
| 2 | PAOZO | 26759 | 7008943 | .HOSE ASSEMBLY,NONME | 1 |
| | | | | END OF FIGURE | |

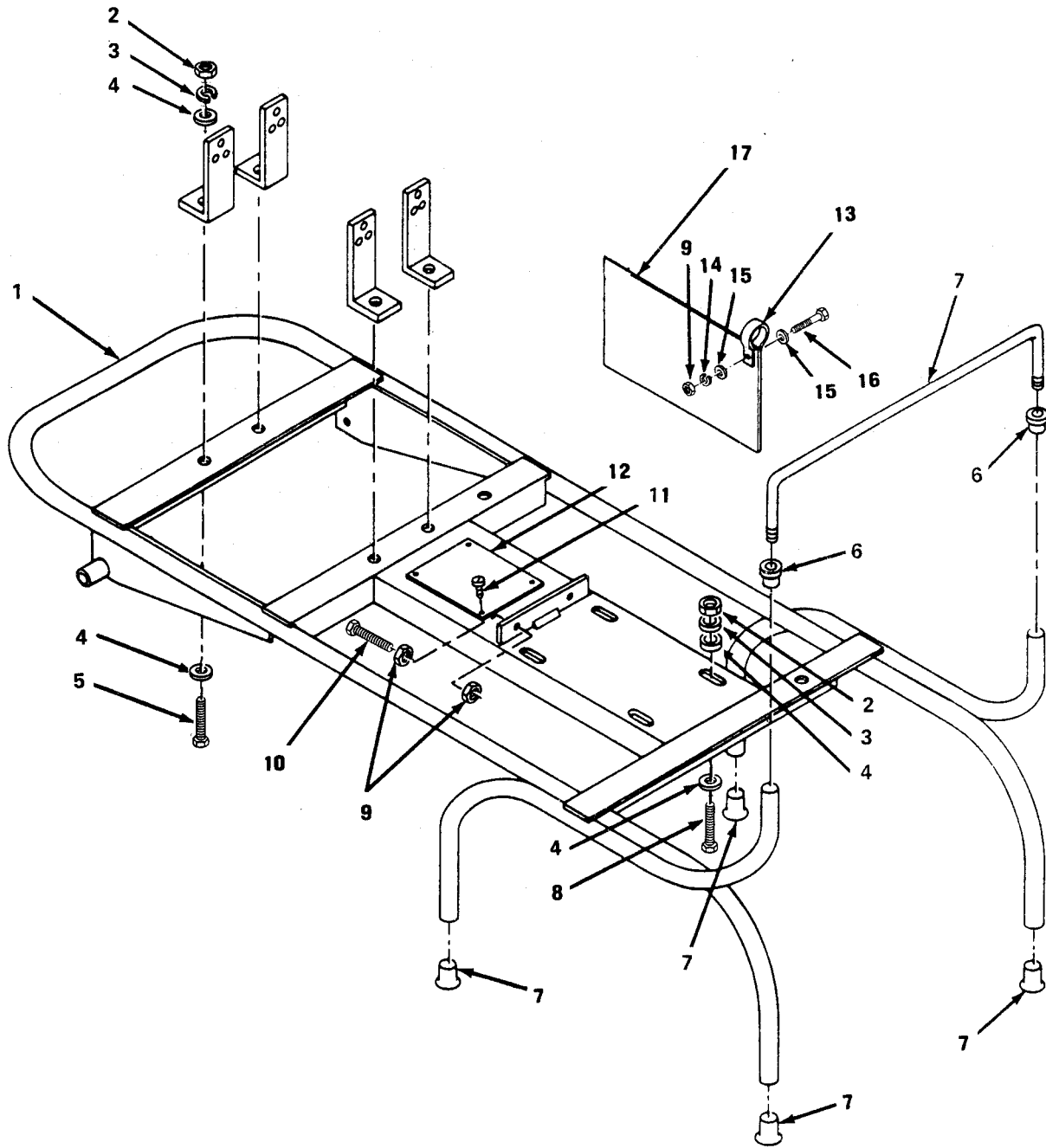


Figure 12. Frame Assembly.

| SECTION II | | | | | |
|-----------------------------|-------|-------|--------------------------|--------------------------------------|-----|
| (1) | (2) | (3) | (4) | (5) | (6) |
| ITEM | SMR | | PART | | |
| NO | CODE | FSCM | NUMBER | DESCRIPTION AND USABLE ON CODE (UOC) | QTY |
| GROUP 07 HANDTRUNK ASSEMBLY | | | | | |
| FIG. 12 FRAME ASSEMBLY | | | | | |
| 1 | XDFZZ | 26759 | 7007737 | BASE,COMP AIR | 1 |
| 2 | PAOZZ | 96906 | MS51967-9 | .NUT,PLAIN,HEXAGON | 2 |
| 3 | PAOZZ | 96906 | MS51967-3 | .NUT,PLAIN,HEXAGON | 8 |
| 4 | PAOZZ | 96906 | MS27183-15 | .WASHER,FLAT | 16 |
| 5 | PAOZZ | 96906 | MS90728-64 | .SCREW,CAP,HEXAGON | 4 |
| 6 | PBOZZ | 82062 | ATRI-7/8INX1/4-2 OTHD | .PLUG, THREAD | 2 |
| 7 | PBOZZ | 76385 | ZB-7020IC095620 | .COVER,TIP TUBING | 4 |
| 8 | PAOZZ | 96906 | MS35355-66 | .BOLT,MACHINE | 4 |
| 9 | PAOZZ | 96906 | MS51967-3 | .NUT,PLAIN,HEXAGON | 8 |
| 10 | PAOZZ | 96906 | MS90728-16 | .SCREW,CAP,HEXAGON | 2 |
| 11 | XBOZZ | 26759 | 100809 | DRIVE SCREW | 4 |
| 12 | XBOZZ | 26759 | 7007637 | PLATE,IDENT | 1 |
| 13 | PAOZZ | 70655 | 10605 | CLAMP,LOOP | 2 |
| 14 | PAOZZ | 96906 | MS35338-44 | WASHER,LOCK | 2 |
| 15 | PAOZZ | 96906 | MS27183-10 | WASHER,FLAT | 3 |
| 16 | XDOZZ | 96906 | MS90728-6 | SCREW,CAP,HEXAGON | 2 |
| 17 | MDOZZ | 26759 | 7009046 | PLATE,WARNING,NOISE | 2 |
| END OF FIGURE | | | | | |

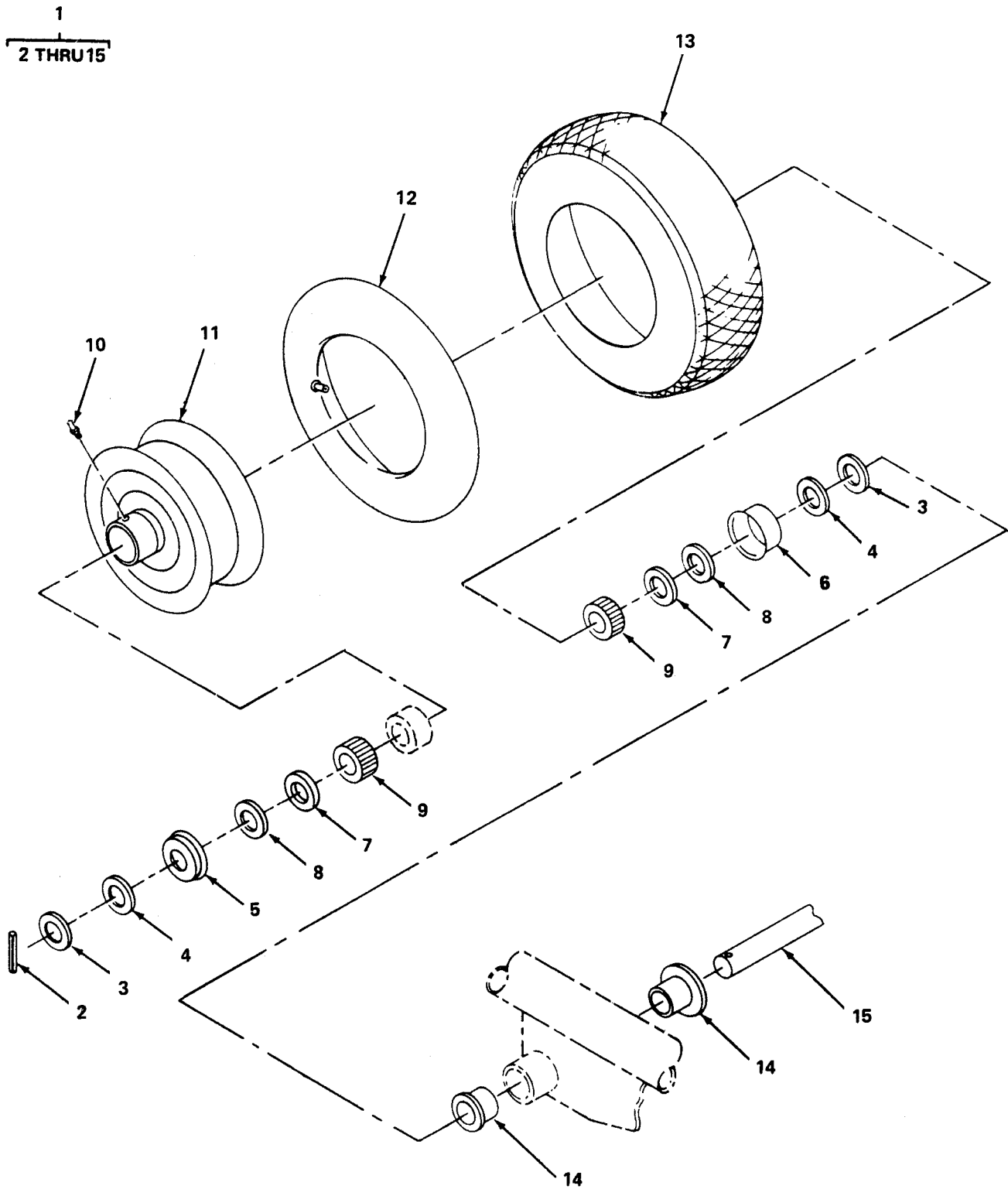


Figure 13. Axle, Wheel and Hub Assembly.

| SECTION II (1) | (2) | (3) | TM5-4310-369-24P (4) | (5) | (6) |
|--------------------------------------|-------------|-------|-------------------------|---|-----|
| ITEM NO | SMR CODE | FSCM | PART NUMBER | DESCRIPTION AND USABLE ON CODE (UOC) | QTY |
| GROUP 07 HANDTRUCK ASSEMBLY | | | | | |
| FIG. 13 AXLE, WHEEL AND HUB ASSEMBLY | | | | | |
| 1 | PAOZZ | 11431 | 52329508 | WHEEL, ASSY | 2 |
| 2 | PAOZZ | 96906 | MS171506 | PIN, SPRING STEEL, CAD. PLATED ; NONMINAL SIZE 3/32IN.DIA. X 1 1/ 4 IN.LG | 2 |
| 3 | XAOZZ | 88044 | AN960-1016 | WASHER, FLAT | 4 |
| 4 | XAOZZ | 26759 | 100818 | .WASHER, THRUST | 2 |
| 5 | XAOZZ | 26759 | 7009062 | .CAP, OUTER | 1 |
| 6 | XAOZZ | 26759 | 7009064 | .CAP, INNER | 1 |
| 7 | XAOZZ | 26759 | 100841 | .WASHER, THRUST | 2 |
| 8 | XAOZZ | 26759 | 100801 | .WASHER, FELT | 4 |
| 9 | XAOZZ | 26759 | 7009063 | .BEARING | 2 |
| 10 | XAOZZ | 26759 | 7009061 | .FITTING, ZERK | 2 |
| 11 | XAOZZ | 11431 | 5232 | .HUB ASSY | 1 |
| 12 | PAOZZ | 96906 | MS35392-48 | .INNER TUBE, PNEUMATI | 2 |
| 13 | PAOOF | 96906 | MS35389-1 | .TIRE, HAND TRUCK | 2 |
| 14 | XBOZZ | 26759 | 100815 | .BUSHING, NYLON | 2 |
| 15 | XBOOO | 26759 | 7007773 | .AXLE, 5/8 IN. DIA | 1 |
| END OF FIGURE | | | | | |

Section III. SPECIAL TOOLS LIST

(Not Applicable)

CROSS-REFERENCE INDEXES

NATIONAL STOCK NUMBER INDEX

| STOCK NUMBER | FIG | ITEM | STOCK NUMBER | FIG | ITEM |
|------------------|-----|------|------------------|-----|------|
| 4730-00-011-6452 | 1 | 21 | 2910-00-711-0395 | 1 | 4 |
| 4310-00-033-1415 | 5 | 24 | 6685-00-718-6887 | 10 | 2 |
| 5310-00-045-3296 | 4 | 3 | 5305-00-725-2317 | 12 | 5 |
| 2610-00-050-9560 | 13 | 13 | 4820-00-752-9040 | 1 | 15 |
| 2610-00-051-9114 | 13 | 12 | | 10 | 8 |
| 2805-00-068-7510 | 9 | 6 | 5310-00-761-0654 | 1 | 19 |
| 5305-00-071-2241 | 1 | 9 | | 12 | 2 |
| | 9 | 1 | 4730-00-788-0441 | 9 | 8 |
| | 10 | 18 | 5310-00-809-4058 | 1 | 10 |
| 5305-00-071-2505 | 3 | 8 | | 3 | 11 |
| | 10 | 14 | | 4 | 7 |
| 5305-00-071-2506 | 5 | 2 | | 5 | 4 |
| 5305-00-071-2509 | 8 | 6 | | 9 | 3 |
| 5305-00-071-2513 | 12 | 10 | | 10 | 15 |
| 5310-00-081-4219 | 4 | 10 | | 12 | 15 |
| 5340-00-087-0301 | 10 | 19 | 5310-00-809-4061 | 12 | 4 |
| 5310-00-087-7493 | 1 | 17 | 5310-00-809-8546 | 4 | 4 |
| 2930-00-105-2373 | 5 | 14 | 5315-00-811-6552 | 13 | 2 |
| 4730-00-187-4200 | 3 | 5 | 4730-00-890-2389 | 10 | 9 |
| 4730-00-188-1874 | 5 | 28 | 5330-00-900-2337 | 5 | 32 |
| 4730-00-196-2055 | 10 | 5 | 4730-00-900-3296 | 3 | 2 |
| 4910-00-204-2644 | 11 | 1 | 5310-00-905-0762 | 1 | 13 |
| 4730-00-222-1839 | 10 | 13 | | 3 | 9 |
| 5305-00-225-3843 | 4 | 5 | | 10 | 17 |
| 5306-00-226-4825 | 4 | 9 | | 12 | 3 |
| | 4 | 15 | | 12 | 9 |
| | 5 | 11 | 2910-00-905-9792 | 2 | 1 |
| 5306-00-226-4829 | 5 | 20 | 4310-00-911-6608 | 7 | 3 |
| 5306-00-226-4832 | 5 | 6 | 4310-00-911-9571 | 8 | 11 |
| 4730-00-254-6215 | 5 | 40 | 5305-00-990-6444 | 4 | 2 |
| 5315-00-256-4794 | 8 | 13 | 5310-00-997-1888 | 4 | 14 |
| 4820-00-263-3024 | 1 | 22 | 5330-01-022-1857 | 6 | 1 |
| 4730-00-278-3836 | 1 | 8 | 2910-01-038-6050 | 1 | 1 |
| 4730-00-287-1603 | 1 | 6 | 4310-01-039-3732 | 5 | 13 |
| 4730-00-289-4057 | 10 | 11 | 4310-01-039-6115 | 6 | 2 |
| 5330-00-291-2337 | 5 | 17 | 4310-01-039-6504 | 6 | 5 |
| 5330-00-295-8839 | 5 | 19 | 4310-01-040-3470 | 6 | 4 |
| 4820-00-398-4873 | 10 | 3 | 4820-01-041-8006 | 6 | 7 |
| 5310-00-407-9566 | 4 | 11 | 4310-01-052-2462 | 5 | 34 |
| 5310-00-582-5965 | 1 | 12 | 4730-01-055-4021 | 3 | 6 |
| | 3 | 10 | 5330-01-065-5889 | 5 | 25 |
| | 4 | 6 | 5305-01-065-9046 | 6 | 6 |
| | 5 | 3 | 5330-01-073-6966 | 5 | 9 |
| | 9 | 2 | 5330-01-073-6967 | 5 | 12 |
| | 12 | 14 | 4935-01-100-6567 | 8 | 12 |
| 5330-00-594-2293 | 2 | 5 | 4720-01-103-8039 | 3 | 3 |
| 5306-00-637-8557 | 12 | 8 | 4720-01-103-8939 | 1 | 7 |
| 5310-00-637-9541 | 1 | 18 | 4720-01-103-8940 | 10 | 1 |
| 4730-00-639-9730 | 3 | 1 | 4720-01-103-8941 | 11 | 2 |
| 2910-00-705-7814 | 1 | 2 | 4730-01-104-7502 | 10 | 7 |

CROSS-REFERENCE INDEXES

NATIONAL STOCK NUMBER INDEX

| STOCK NUMBER | FIG | ITEM | STOCK NUMBER | FIG | ITEM |
|------------------|-----|------|--------------|-----|------|
| 3020-01-104-8822 | 4 | 16 | | | |
| 5330-01-106-9382 | 7 | 1 | | | |
| 5330-01-106-9383 | 7 | 9 | | | |
| 4310-01-108-7901 | 8 | 5 | | | |
| 5330-01-111-9292 | 1 | 3 | | | |
| 4820-01-112-6254 | 10 | 10 | | | |
| 4820-01-118-6070 | 5 | 22 | | | |
| 5340-01-119-8671 | 12 | 13 | | | |
| 9320-01-159-0431 | 12 | 7 | | | |
| 4310-01-184-7504 | 13 | 1 | | | |
| 5340-01-242-9258 | 4 | 12 | | | |
| 3020-01-243-4341 | 4 | 1 | | | |
| 3030-01-290-4956 | 4 | 17 | | | |

CROSS-REFERENCE INDEXES

PART NUMBER INDEX

| FSCM | PART NUMBER | STOCK NUMBER | FIG | ITEM |
|-------|------------------|------------------|-----|------|
| 11568 | A-100 | | 5 | 31 |
| 11568 | A-102 | | 8 | 3 |
| 11568 | A-12A | 2930-00-105-2373 | 5 | 14 |
| 11568 | A-15 | | 5 | 26 |
| 11568 | A-21 | | 8 | 4 |
| 11568 | A-29 | 5330-01-073-6967 | 5 | 12 |
| 11568 | A-33 | 5330-01-065-5889 | 5 | 25 |
| 11568 | A-4A | | 8 | 2 |
| 11568 | A-6A | | 5 | 10 |
| 88044 | AN960-1016 | | 13 | 3 |
| 82062 | ATRI-7/8INX1/4-2 | | 12 | 6 |
| | OTHD | | | |
| 86823 | A21951 | 2910-00-705-7814 | 1 | 2 |
| 11568 | B-14 | | 5 | 27 |
| 11568 | B-26A | | 7 | 2 |
| 11568 | B-28B | | 5 | 23 |
| 11568 | B-31 | 5330-01-073-6966 | 5 | 9 |
| 11568 | B-75 | 5330-01-106-9382 | 7 | 1 |
| 11568 | B-9 | | 5 | 39 |
| 11568 | C-1 | 4310-00-033-1415 | 5 | 24 |
| 11568 | C-14C | | 5 | 35 |
| 11568 | C-28B | | 5 | 21 |
| 11568 | C-30 | 5330-00-900-2337 | 5 | 32 |
| 11568 | C-30A | | 5 | 36 |
| 11568 | C-30B | | 5 | 37 |
| 11568 | C-5 | | 8 | 14 |
| 11568 | C-6B | | 5 | 18 |
| 11568 | CAW-1 | | 5 | 1 |
| 11568 | C31 | 5330-00-295-8839 | 5 | 19 |
| 58818 | LGM-20 | 4820-01-112-6254 | 10 | 10 |
| 11568 | M-1561 | 4310-01-039-3732 | 5 | 13 |
| 11568 | M-1562 | 4310-01-039-6115 | 6 | 2 |
| 11568 | M-1563 | 4820-01-041-8006 | 6 | 7 |
| 11568 | M-1564 | 5330-01-022-1857 | 6 | 1 |
| 11568 | M-1565 | 5305-01-065-9046 | 6 | 6 |
| 11568 | M-1586 | 4310-01-040-3470 | 6 | 4 |
| 11568 | M-1587 | 4310-01-039-6504 | 6 | 5 |
| 11568 | M-1796 | | 5 | 38 |
| 11568 | M-2236 | | 8 | 9 |
| 11568 | M-461 | | 5 | 29 |
| 11568 | M-568 | | 5 | 16 |
| 23224 | MODEL31000 A-4 3 | | 1 | 5 |
| | /4 IN.LG. | | | |
| 91340 | MP200-24 | 4730-00-187-4200 | 3 | 5 |
| 96906 | MS171506 | 5315-00-811-6552 | 13 | 2 |
| 96906 | MS27183-10 | 5310-00-809-4058 | 1 | 10 |
| | | | 3 | 11 |
| | | | 4 | 7 |
| | | | 5 | 4 |
| | | | 9 | 3 |
| | | | 10 | 15 |

CROSS-REFERENCE INDEXES

PART NUMBER INDEX

| FSCM | PART NUMBER | STOCK NUMBER | FIG | ITEM |
|-------|--------------|------------------|-----|------|
| 96906 | MS27183-10 | 5310-00-809-4058 | 12 | 15 |
| 96906 | MS27183-12 | 5310-00-081-4219 | 4 | 10 |
| 96906 | MS27183-13 | 5310-00-087-7493 | 1 | 17 |
| 96906 | MS27183-15 | 5310-00-809-4061 | 12 | 4 |
| 96906 | MS27183-8 | 5310-00-809-8546 | 4 | 4 |
| 96906 | MS29966-256 | 5315-00-256-4794 | 8 | 13 |
| 96906 | MS35207-261 | 5305-00-990-6444 | 4 | 2 |
| 96906 | MS35338-43 | 5310-00-045-3296 | 4 | 3 |
| 96906 | MS35338-44 | 5310-00-582-5965 | 1 | 12 |
| | | | 3 | 10 |
| | | | 4 | 6 |
| | | | 5 | 3 |
| | | | 9 | 2 |
| | | | 12 | 14 |
| 96906 | MS35338-45 | 5310-00-407-9566 | 4 | 11 |
| 96906 | MS35338-46 | 5310-00-637-9541 | 1 | 18 |
| 96906 | MS35355-66 | 5306-00-637-8557 | 12 | 8 |
| 96906 | MS35388-44 | | 10 | 16 |
| 96906 | MS35389-1 | 2610-00-050-9560 | 13 | 13 |
| 96906 | MS35392-48 | 2610-00-051-9114 | 13 | 12 |
| 96906 | MS35649-2252 | 5310-00-997-1888 | 4 | 14 |
| 96906 | MS35782-4 | 4820-00-752-9040 | 1 | 15 |
| | | | 10 | 8 |
| 96906 | MS39162-7 | 4730-00-254-6215 | 5 | 40 |
| 96906 | MS51086-1 | 2910-00-905-9792 | 2 | 1 |
| 96906 | MS51953-25B | 4730-00-196-2055 | 10 | 5 |
| 96906 | MS51953-63B | 4730-00-188-1874 | 5 | 28 |
| 96906 | MS51967-3 | 5310-00-905-0762 | 1 | 13 |
| | | | 3 | 9 |
| | | | 10 | 17 |
| | | | 12 | 3 |
| | | | 12 | 9 |
| 96906 | MS51967-9 | 5310-00-761-0654 | 1 | 19 |
| | | | 12 | 2 |
| 96906 | MS90725-10 | 5305-00-071-2241 | 1 | 9 |
| | | | 9 | 1 |
| | | | 10 | 18 |
| 96906 | MS90728-12 | 5305-00-071-2509 | 8 | 6 |
| 96906 | MS90728-16 | 5305-00-071-2513 | 12 | 10 |
| 96906 | MS90728-3 | 5305-00-071-2506 | 5 | 2 |
| 96906 | MS90728-32 | 5306-00-226-4825 | 4 | 9 |
| | | | 4 | 15 |
| | | | 5 | 11 |
| 96906 | MS90728-36 | 5306-00-226-4829 | 5 | 20 |
| 96906 | MS90728-39 | 5306-00-226-4832 | 5 | 6 |
| 96906 | MS90728-6 | | 5 | 30 |
| | | | 12 | 16 |
| 96906 | MS90728-64 | 5305-00-725-2317 | 12 | 5 |
| 96906 | MS90728-7 | 5305-00-071-2505 | 3 | 8 |
| | | | 10 | 14 |
| 96906 | MS90728-8 | 5305-00-225-3843 | 4 | 5 |

CROSS-REFERENCE INDEXES

PART NUMBER INDEX

| FSCM | PART NUMBER | STOCK NUMBER | FIG | ITEM |
|-------|---------------------------|------------------|-----|------|
| 96906 | MS99728-7 | | 9 | 7 |
| 11568 | NR-4-7A | | 5 | 15 |
| 11568 | OS-A5A | 5330-00-291-2337 | 5 | 17 |
| 11568 | P-3703A | | 6 | 3 |
| 11568 | P-4581A | 4310-01-052-2462 | 5 | 34 |
| 11568 | P-4582A | | 5 | 33 |
| 11568 | P-5031B | 4310-01-108-7901 | 8 | 5 |
| 11568 | P-5086A | | 8 | 15 |
| 11568 | P-5087A | | 8 | 16 |
| 11568 | P-5171A | | 8 | 10 |
| 11568 | P-5172A | | 8 | 7 |
| 11568 | P-5269A | 4820-01-118-6070 | 5 | 22 |
| 61349 | P500 1/4LM2IN-30 0 PSI | 6685-00-718-6887 | 10 | 2 |
| 86823 | T-17-4 | 2910-00-711-0395 | 1 | 4 |
| 11568 | U-48 | 5330-01-106-9383 | 7 | 9 |
| 11568 | U-66A | | 7 | 12 |
| 11568 | U-67A | | 7 | 13 |
| 11568 | U-68A | | 7 | 5 |
| 11568 | U-69A | | 7 | 8 |
| 11568 | U-70A | | 7 | 7 |
| 11568 | U-71 | | 7 | 6 |
| 11568 | U-81 | | 7 | 4 |
| 14351 | X5162 | 4730-00-639-9730 | 3 | 1 |
| 11568 | Z-1098 | | 8 | 8 |
| 11568 | Z-121A | | 7 | 11 |
| 11568 | Z-122A | 4310-00-911-6608 | 7 | 3 |
| 11568 | Z-515 | | 5 | 8 |
| 11568 | ZA-10 | | 8 | 1 |
| 76385 | ZB-7020IC095620 | 9320-01-159-0431 | 12 | 7 |
| 11568 | ZC-10 | 4310-00-911-9571 | 8 | 11 |
| 11568 | ZC-16 | 4935-01-100-6567 | 8 | 12 |
| 81348 | ZZ-B-190/2C62B2R | 3030-01-290-4956 | 4 | 17 |
| 26759 | 007628 | 5330-01-111-9292 | 1 | 3 |
| 80463 | 100-7 | | 2 | 3 |
| 26759 | 100651A | | 10 | 6 |
| 26759 | 100652A | | 10 | 4 |
| 26759 | 100780 | 4910-00-204-2644 | 11 | 1 |
| 26759 | 100795 | | 4 | 18 |
| 26759 | 100800 | 4730-00-222-1839 | 10 | 13 |
| 26759 | 100801 | | 13 | 8 |
| 26759 | 100807 | 4730-01-104-7502 | 10 | 7 |
| 26759 | 100809 | | 12 | 11 |
| 26759 | 100815 | | 13 | 14 |
| 26759 | 100818 | | 13 | 4 |
| 26759 | 100841 | | 13 | 7 |
| 26759 | 100881 | | 3 | 4 |
| 26759 | 101191 | 4730-01-055-4021 | 3 | 6 |
| 26759 | 101192 | | 1 | 11 |
| 26759 | 101223 | | 1 | 20 |
| 26759 | 101224 | | 1 | 16 |

CROSS-REFERENCE INDEXES

PART NUMBER INDEX

| FSCM | PART NUMBER | STOCK NUMBER | FIG | ITEM |
|-------|--------------|------------------|-----|------|
| 26759 | 101232 | 4730-00-289-4057 | 10 | 11 |
| 26759 | 101295-4 | | 10 | 12 |
| 26759 | 101307 | | 7 | 10 |
| 70655 | 10605 | 5340-01-119-8671 | 12 | 13 |
| 79470 | 1110X4 | 4730-00-011-6452 | 1 | 21 |
| 97403 | 13227E8837 | 5340-01-242-9258 | 4 | 12 |
| 97403 | 13227E8838 | | 4 | 8 |
| 97403 | 13227E8839 | | 4 | 13 |
| 97403 | 13227E8841 | 3020-01-243-4341 | 4 | 1 |
| 70040 | 1522092 | | 2 | 7 |
| 01276 | 2003-2-4B | | 3 | 12 |
| 86823 | 43313 | 2910-01-038-6050 | 1 | 1 |
| 34494 | 48A1-4SET200 | 4820-00-398-4873 | 10 | 3 |
| 79470 | 48X4 | 4730-00-900-3296 | 3 | 2 |
| 79470 | 49X8X8 | 4730-00-890-2389 | 10 | 9 |
| 79470 | 50X4 | 4730-00-278-3836 | 1 | 8 |
| 11431 | 5232 | | 13 | 11 |
| 11431 | 52329508 | 4310-01-184-7504 | 13 | 1 |
| 79470 | 537 | 4820-00-263-3024 | 1 | 22 |
| 26759 | 7007637 | | 12 | 12 |
| 26759 | 7007658 | 3020-01-104-8822 | 4 | 16 |
| 26759 | 7007737 | | 12 | 1 |
| 26759 | 7007772 | | 9 | 5 |
| 26759 | 7007773 | | 13 | 15 |
| 26759 | 7007776 | | 9 | 4 |
| 26759 | 7007777 | | 10 | 20 |
| 26759 | 7008776 | 4720-01-103-8939 | 1 | 7 |
| 26759 | 7008777 | 4720-01-103-8039 | 3 | 3 |
| 26759 | 7008778 | 4720-01-103-8940 | 10 | 1 |
| 26759 | 7008779 | | 3 | 7 |
| 26759 | 7008919 | | 5 | 7 |
| 19099 | 7008921 | | 5 | 5 |
| 26759 | 7008927 | | 1 | 14 |
| 26759 | 7008943 | 4720-01-103-8941 | 11 | 2 |
| 26759 | 7008952 | 4730-00-287-1603 | 1 | 6 |
| 26759 | 7009045 | | 5 | 41 |
| 26759 | 7009046 | | 12 | 17 |
| 26759 | 7009061 | | 13 | 10 |
| 26759 | 7009062 | | 13 | 5 |
| 26759 | 7009063 | | 13 | 9 |
| 26759 | 7009064 | | 13 | 6 |
| 70040 | 854078 | | 2 | 2 |
| 80463 | 854187 | | 2 | 6 |
| 70040 | 854254 | | 2 | 4 |
| 70040 | 854389 | 5330-00-594-2293 | 2 | 5 |
| 01276 | 900729-6 | 5340-00-087-0301 | 10 | 19 |
| 97403 | 9786E3MARK3 | 2805-00-068-7510 | 9 | 6 |
| 97403 | 9786E88 | 4730-00-788-0441 | 9 | 8 |

CROSS-REFERENCE INDEXES

| FIG | ITEM | FIGURE AND ITEM NUMBER INDEX | | PART NUMBER |
|-----|------|------------------------------|-------|-------------------------------|
| | | STOCK NUMBER | FSCM | |
| 1 | 1 | 2910-01-038-6050 | 86823 | 43313 |
| 1 | 2 | 2910-00-705-7814 | 8683 | A21951 |
| 1 | 3 | 5330-01-111-9292 | 26759 | 007628 |
| 1 | 4 | 2910-00-711-0395 | 86823 | T-17-4 |
| 1 | 5 | | 23224 | MODEL31000 A-4 3 /4 IN.LG. |
| 1 | 6 | 4730-00-287-1603 | 26759 | 7008952 |
| 1 | 7 | 4720-01-103-8939 | 26759 | 7008776 |
| 1 | 8 | 4730-00-278-3836 | 79470 | 50X4 |
| 1 | 9 | 5305-00-071-2241 | 96906 | MS90725-10 |
| 1 | 10 | 5310-00-809-4058 | 96906 | MS27183-10 |
| 1 | 11 | | 26759 | 101192 |
| 1 | 12 | 5310-00-582-5965 | 96906 | MS35338-44 |
| 1 | 13 | 5310-00-905-0762 | 96906 | MS51967-3 |
| 1 | 14 | | 26759 | 7008927 |
| 1 | 15 | 4820-00-752-9040 | 96906 | MS35782-4 |
| 1 | 16 | | 26759 | 101224 |
| 1 | 17 | 5310-00-087-7493 | 96906 | MS27183-13 |
| 1 | 18 | 5310-00-637-9541 | 96906 | MS35338-46 |
| 1 | 19 | 5310-00-761-0654 | 96906 | MS51967-9 |
| 1 | 20 | | 26759 | 101223 |
| 1 | 21 | 4730-00-011-6452 | 79470 | 1110X4 |
| 1 | 22 | 4820-00-263-3024 | 79470 | 537 |
| 2 | 1 | 2910-00-905-9792 | 96906 | MS51086-1 |
| 2 | 2 | | 70040 | 854078 |
| 2 | 3 | | 80463 | 100-7 |
| 2 | 4 | | 70040 | 854254 |
| 2 | 5 | 5330-00-594-2293 | 70040 | 854389 |
| 2 | 6 | | 80463 | 854187 |
| 2 | 7 | | 70040 | 1522092 |
| 3 | 1 | 4730-00-639-9730 | 14351 | X5162 |
| 3 | 2 | 4730-00-900-3296 | 79470 | 48X4 |
| 3 | 3 | 4720-01-103-8039 | 26759 | 7008777 |
| 3 | 4 | | 26759 | 100881 |
| 3 | 5 | 4730-00-187-4200 | 91340 | MP200-24 |
| 3 | 6 | 4730-01-055-4021 | 26759 | 101191 |
| 3 | 7 | | 26759 | 7008779 |
| 3 | 8 | 5305-00-071-2505 | 96906 | MS90728-7 |
| 3 | 9 | 5310-00-905-0762 | 96906 | MS51967-3 |
| 3 | 10 | 5310-00-582-5965 | 96906 | MS35338-44 |
| 3 | 11 | 5310-00-809-4058 | 96906 | MS27183-10 |
| 3 | 12 | | 01276 | 2003-2-4B |
| 4 | 1 | 3020-01-243-4341 | 97403 | 13227E8841 |
| 4 | 2 | 5305-00-990-6444 | 96906 | MS35207-261 |
| 4 | 3 | 5310-00-045-3296 | 96906 | MS35338-43 |
| 4 | 4 | 5310-00-809-8546 | 96906 | MS27183-8 |
| 4 | 5 | 5305-00-225-3843 | 96906 | MS90728-8 |
| 4 | 6 | 5310-00-582-5965 | 96906 | MS35338-44 |
| 4 | 7 | 5310-00-809-4058 | 96906 | MS27183-10 |
| 4 | 8 | | 97403 | 13227E8838 |
| 4 | 9 | 5306-00-226-4825 | 96906 | MS90728-32 |

CROSS-REFERENCE INDEXES

| FIG | ITEM | FIGURE AND ITEM NUMBER INDEX | | PART NUMBER |
|-----|------|------------------------------|-------|------------------|
| | | STOCK NUMBER | FSCM | |
| 4 | 10 | 5310-00-081-4219 | 96906 | MS27183-12 |
| 4 | 11 | 5310-00-407-9566 | 96906 | MS35338-45 |
| 4 | 12 | 5340-01-242-9258 | 97403 | 13227E8837 |
| 4 | 13 | | 97403 | 13227E8839 |
| 4 | 14 | 5310-00-997-1888 | 96906 | MS35649-2252 |
| 4 | 15 | 5306-00-226-4825 | 96906 | MS90728-32 |
| 4 | 16 | 3020-01-104-8822 | 26759 | 7007658 |
| 4 | 17 | 3030-01-290-4956 | 81348 | ZZ-B-190/2C62B2R |
| 4 | 18 | | 26759 | 100795 |
| 5 | 1 | | 11568 | CAW-1 |
| 5 | 2 | 5305-00-071-2506 | 96906 | MS90728-3 |
| 5 | 3 | 5310-00-582-5965 | 96906 | MS35338-44 |
| 5 | 4 | 5310-00-809-4058 | 96906 | MS27183-10 |
| 5 | 5 | | 19099 | 7008921 |
| 5 | 6 | 5306-00-226-4832 | 96906 | MS90728-39 |
| 5 | 7 | | 26759 | 7008919 |
| 5 | 8 | | 11568 | Z-515 |
| 5 | 9 | 5330-01-073-6966 | 11568 | B-31 |
| 5 | 10 | | 11568 | A-6A |
| 5 | 11 | 5306-00-226-4825 | 96906 | MS90728-32 |
| 5 | 12 | 5330-01-073-6967 | 11568 | A-29 |
| 5 | 13 | 4310-01-039-3732 | 11568 | M-1561 |
| 5 | 14 | 2930-00-105-2373 | 11568 | A-12A |
| 5 | 15 | | 11568 | NR-4-7A |
| 5 | 16 | | 11568 | M-568 |
| 5 | 17 | 5330-00-291-2337 | 11568 | OS-A5A |
| 5 | 18 | | 11568 | C-6B |
| 5 | 19 | 5330-00-295-8839 | 11568 | C31 |
| 5 | 20 | 5306-00-226-4829 | 96906 | MS90728-36 |
| 5 | 21 | | 11568 | C-28B |
| 5 | 22 | 4820-01-118-6070 | 11568 | P-5269A |
| 5 | 23 | | 11568 | B-28B |
| 5 | 24 | 4310-00-033-1415 | 11568 | C-1 |
| 5 | 25 | 5330-01-065-5889 | 11568 | A-33 |
| 5 | 26 | | 11568 | A-15 |
| 5 | 27 | | 15568 | B-14 |
| 5 | 28 | 4730-00-188-1874 | 96906 | MS51953-63B |
| 5 | 29 | | 11568 | M-461 |
| 5 | 30 | | 96906 | MS90728-6 |
| 5 | 31 | | 11568 | A-100 |
| 5 | 32 | 5330-00-900-2337 | 11568 | C-30 |
| 5 | 33 | | 11568 | P-4582A |
| 5 | 34 | 4310-01-052-2462 | 11568 | P-4581A |
| 5 | 35 | | 11568 | C-14C |
| 5 | 36 | | 11568 | C-30A |
| 5 | 37 | | 11568 | C-30B |
| 5 | 38 | | 11568 | M-1796 |
| 5 | 39 | | 11568 | B-9 |
| 5 | 40 | 4730-00-254-6215 | 96906 | MS39162-7 |
| 5 | 41 | | 26759 | 7009045 |
| 6 | 1 | 5330-01-022-1857 | 11568 | M-1564 |

CROSS-REFERENCE INDEXES

| FIG | ITEM | FIGURE AND ITEM NUMBER INDEX | | PART NUMBER |
|-----|------|------------------------------|-------|---------------------------|
| | | STOCK NUMBER | FSCM | |
| 6 | 2 | 4310-01-039-6115 | 11568 | M-1562 |
| 6 | 3 | | 11568 | P-3703A |
| 6 | 4 | 4310-01-040-3470 | 11568 | M-1586 |
| 6 | 5 | 4310-01-039-6504 | 11568 | M-1587 |
| 6 | 6 | 5305-01-065-9046 | 11568 | M-1565 |
| 6 | 7 | 4820-01-041-8006 | 11568 | M-1563 |
| 7 | 1 | 5330-01-106-9382 | 11568 | B-75 |
| 7 | 2 | | 11568 | B-26A |
| 7 | 3 | 4310-00-911-6608 | 11568 | Z-122A |
| 7 | 4 | | 11568 | U-81 |
| 7 | 5 | | 11568 | U-68A |
| 7 | 6 | | 11568 | U-71 |
| 7 | 7 | | 11568 | U-70A |
| 7 | 8 | | 11568 | U-69A |
| 7 | 9 | 5330-01-106-9383 | 11568 | U-48 |
| 7 | 10 | | 26759 | 101307 |
| 7 | 11 | | 11568 | Z-121A |
| 7 | 12 | | 11568 | U-66A |
| 7 | 13 | | 11568 | U-67A |
| 8 | 1 | | 11568 | ZA-10 |
| 8 | 2 | | 11568 | A-4A |
| 8 | 3 | | 11568 | A-102 |
| 8 | 4 | | 11568 | A-21 |
| 8 | 5 | 4310-01-108-7901 | 11568 | P-5031B |
| 8 | 6 | 5305-00-071-2509 | 96906 | MS90728-12 |
| 8 | 7 | | 11568 | P-5172A |
| 8 | 8 | | 11568 | Z-1098 |
| 8 | 9 | | 11568 | M-2236 |
| 8 | 10 | | 11568 | P-5171A |
| 8 | 11 | 4310-00-911-9571 | 11568 | ZC-10 |
| 8 | 12 | 4935-01-100-6567 | 11568 | ZC-16 |
| 8 | 13 | 5315-00-256-4794 | 96906 | MS29966-256 |
| 8 | 14 | | 11568 | C-5 |
| 8 | 15 | | 11568 | P-5086A |
| 8 | 16 | | 11568 | P-5087A |
| 9 | 1 | 5305-00-071-2241 | 96906 | MS90725-10 |
| 9 | 2 | 5310-00-582-5965 | 96906 | MS35338-44 |
| 9 | 3 | 5310-00-809-4058 | 96906 | MS27183-10 |
| 9 | 4 | | 26759 | 7007776 |
| 9 | 5 | | 26759 | 7007772 |
| 9 | 6 | 2805-00-068-7510 | 97403 | 9786E3MARK3 |
| 9 | 7 | | 96906 | MS99728-7 |
| 9 | 8 | 4730-00-788-0441 | 97403 | 9786E88 |
| 10 | 1 | 4720-01-103-8940 | 26759 | 7008778 |
| 10 | 2 | 6685-00-718-6887 | 61349 | P500 1/4LM2IN-30 0 PSI |
| 10 | 3 | 4820-00-398-4873 | 34494 | 48A1-4SET200 |
| 10 | 4 | | 26759 | 100652A |
| 10 | 5 | 4730-00-196-2055 | 96906 | MS51953-25B |
| 10 | 6 | | 26759 | 100651A |
| 10 | 7 | 4730-01-104-7502 | 26759 | 100807 |

CROSS-REFERENCE INDEXES

| FIG | ITEM | FIGURE AND ITEM NUMBER INDEX | | PART NUMBER |
|-----|------|------------------------------|-------|--------------------------|
| | | STOCK NUMBER | FSCM | |
| 10 | 8 | 4820-00-752-9040 | 96906 | MS35782-4 |
| 10 | 9 | 4730-00-890-2389 | 79470 | 49X8X8 |
| 10 | 10 | 4820-01-112-6254 | 58818 | LGM-20 |
| 10 | 11 | 4730-00-289-4057 | 26759 | 101232 |
| 10 | 12 | | 26759 | 101295-4 |
| 10 | 13 | 4730-00-222-1839 | 26759 | 100800 |
| 10 | 14 | 5305-00-071-2505 | 96906 | MS90728-7 |
| 10 | 15 | 5310-00-809-4058 | 96906 | MS27183-10 |
| 10 | 16 | | 96906 | MS35388-44 |
| 10 | 17 | 5310-00-905-0762 | 96906 | MS51967-3 |
| 10 | 18 | 5305-00-071-2241 | 96906 | MS90725-10 |
| 10 | 19 | 5340-00-087-0301 | 01276 | 900729-6 |
| 10 | 20 | | 26759 | 7007777 |
| 11 | 1 | 4910-00-204-2644 | 26759 | 100780 |
| 11 | 2 | 4720-01-103-8941 | 26759 | 7008943 |
| 12 | 1 | | 26759 | 7007737 |
| 12 | 2 | 5310-00-761-0654 | 96906 | MS51967-9 |
| 12 | 3 | 5310-00-905-0762 | 96906 | MS51967-3 |
| 12 | 4 | 5310-00-809-4061 | 96906 | MS27183-15 |
| 12 | 5 | 5305-00-725-2317 | 96906 | MS90728-64 |
| 12 | 6 | | 82062 | ATRI-7/8INX1/4-2 OTHD |
| 12 | 7 | 9320-01-159-0431 | 76385 | ZB-7020IC095620 |
| 12 | 8 | 5306-00-637-8557 | 96906 | MS35355-66 |
| 12 | 9 | 5310-00-905-0762 | 96906 | MS51967-3 |
| 12 | 10 | 5305-00-071-2513 | 96906 | MS90728-16 |
| 12 | 11 | | 26759 | 100809 |
| 12 | 12 | | 26759 | 7007637 |
| 12 | 13 | 5340-01-119-8671 | 70655 | 10605 |
| 12 | 14 | 5310-00-582-5965 | 96906 | MS35338-44 |
| 12 | 15 | 5310-00-809-4058 | 96906 | MS27183-10 |
| 12 | 16 | | 96906 | MS90728-6 |
| 12 | 17 | | 26759 | 7009046 |
| 13 | 1 | 4310-01-184-7504 | 11431 | 52329508 |
| 13 | 2 | 5315-00-811-6552 | 96906 | MS171506 |
| 13 | 3 | | 88044 | AN960-1016 |
| 13 | 4 | | 26759 | 100818 |
| 13 | 5 | | 26759 | 7009062 |
| 13 | 6 | | 26759 | 7009064 |
| 13 | 7 | | 26759 | 100841 |
| 13 | 8 | | 26759 | 100801 |
| 13 | 9 | | 26759 | 7009063 |
| 13 | 10 | | 26759 | 7009061 |
| 13 | 11 | | 11431 | 5232 |
| 13 | 12 | 2610-00-051-9114 | 96906 | MS35392-48 |
| 13 | 13 | 2610-00-050-9560 | 96906 | MS35389-1 |
| 13 | 14 | | 26759 | 100815 |
| 13 | 15 | | 26759 | 7007773 |

By Order of the Secretary of the Army:

CARL E. VUONO
General, United States Army
Chief of Staff

Official:

WILLIAM J. MEEHAN, II
Brigadier General, United States Army
The Adjutant General

DISTRIBUTION:

To be distributed in accordance with DA Form 12-25A, Unit, Direct Support and General Support Maintenance requirements for Compressor, Reciprocating, Air, Gas, Hand Truck Mounted, 5 CFM, 175 PSI (IS-7.95-5CFM)

RECOMMENDED CHANGES TO EQUIPMENT TECHNICAL PUBLICATIONS



THEN... JOT DOWN THE DOPE ABOUT IT ON THIS FORM. CAREFULLY TEAR IT OUT, FOLD IT AND DROP IT IN THE MAIL!

SOMETHING WRONG WITH THIS PUBLICATION?

FROM: (PRINT YOUR UNIT'S COMPLETE ADDRESS)

PFC JOHN DOE
COA, 3d ENGINEER BN
FT. LEONARD WOOD, MO 63108

DATE SENT

PUBLICATION NUMBER

TM 5-4310-369-24P

PUBLICATION DATE

24 August 1989

PUBLICATION TITLE

COMPRESSOR, AIR HANDTRUCK MOUNTED

BE EXACT... PIN-POINT WHERE IT IS

| PAGE NO | PARA-GRAPH | FIGURE NO | TABLE NO |
|---------|------------|-----------|----------|
|---------|------------|-----------|----------|

6

2-1
a

B1

4-3

125

line 20

IN THIS SPACE TELL WHAT IS WRONG AND WHAT SHOULD BE DONE ABOUT IT:

In line 6 of paragraph 2-1a the manual states the engine has 6 cylinders. The engine on my set only has 4 cylinders. Change the manual to show 4 cylinders.

Callout 16 on figure 4-3 is pointing at a bolt. In key to figure 4-3, item 16 is called a shim - Please correct one or the other.

I ordered a gasket, item 19 on figure B-16 by NSN 2 910-00-762-3001. I got a gasket but it doesn't fit. Supply says I got what I ordered, so the NSN is wrong. Please give me a good NSN

PRINTED NAME, GRADE OR TITLE, AND TELEPHONE NUMBER

JOHN DOE, PFC (268) 317-7111

SIGN HERE:

JOHN DOE

DA FORM 2028-2
1 JUL 79

PREVIOUS EDITIONS ARE OBSOLETE.
DRSTS-M Overprint 1, 1 Nov 80

P.S.--IF YOUR OUTFIT WANTS TO KNOW ABOUT YOUR RECOMMENDATION MAKE A CARBON COPY OF THIS AND GIVE IT TO YOUR HEADQUARTERS.

TEAR ALONG PERFORATED LINE

FILL IN YOUR
UNIT'S ADDRESS

FOLD BACK

DEPARTMENT OF THE ARMY

OFFICIAL BUSINESS
PENALTY FOR PRIVATE USE \$300

POSTAGE AND FEES PAID
DEPARTMENT OF THE ARMY
DOD 314



COMMANDER
U S ARMY TROOP SUPPORT COMMAND
ATTN: AMSTR-MCTS
4300 GOODFELLOW BOULEVARD
ST. LOUIS, MO 63120-1798

TEAR ALONG PERFORATED LINE

RECOMMENDED CHANGES TO EQUIPMENT TECHNICAL PUBLICATIONS



THEN... JOT DOWN THE DOPE ABOUT IT ON THIS FORM. CAREFULLY TEAR IT OUT. FOLD IT AND DROP IT IN THE MAIL!

SOMETHING WRONG WITH THIS PUBLICATION?

FROM: (PRINT YOUR UNIT'S COMPLETE ADDRESS)

DATE SENT

PUBLICATION NUMBER

TM 5-4310-369-24P

PUBLICATION DATE

24 August 1989

PUBLICATION TITLE

COMPRESSOR, AIR HANDTRUCK MOUNTED

BE EXACT . . . PIN-POINT WHERE IT IS

| PAGE NO | PARA-GRAPH | FIGURE NO | TABLE NO |
|---------|------------|-----------|----------|
| | | | |

IN THIS SPACE TELL WHAT IS WRONG AND WHAT SHOULD BE DONE ABOUT IT:

PRINTED NAME, GRADE OR TITLE, AND TELEPHONE NUMBER

SIGN HERE

DA FORM 2028-2
1 JUL 79

PREVIOUS EDITIONS ARE OBSOLETE.
DRSTS-M Overprint 2, 1 Nov 80.

P.S.--IF YOUR OUTFIT WANTS TO KNOW ABOUT YOUR RECOMMENDATION MAKE A CARBON COPY OF THIS AND GIVE IT TO YOUR HEADQUARTERS.

TEAR ALONG PERFORATED LINE

FILL IN YOUR
UNIT'S ADDRESS

FOLD BACK

DEPARTMENT OF THE ARMY

OFFICIAL BUSINESS
PENALTY FOR PRIVATE USE \$300

POSTAGE AND FEES PAID
DEPARTMENT OF THE ARMY
DOD 314



TEAR ALONG PERFORATED LINE

COMMANDER
U S ARMY TROOP SUPPORT COMMAND
ATTN: AMSTR-MCTS
4300 GOODFELLOW BOULEVARD
ST. LOUIS, MO 63120-1798

FILL IN YOUR
UNIT'S ADDRESS

FOLD BACK

DEPARTMENT OF THE ARMY

OFFICIAL BUSINESS
PENALTY FOR PRIVATE USE \$300

POSTAGE AND FEES PAID
DEPARTMENT OF THE ARMY
DOD 314



TEAR ALONG PERFORATED LINE

COMMANDER
U S ARMY TROOP SUPPORT COMMAND
ATTN: AMSTR-MCTS
4300 GOODFELLOW BOULEVARD
ST. LOUIS, MO 63120-1798

FILL IN YOUR
UNIT'S ADDRESS

FOLD BACK

DEPARTMENT OF THE ARMY

OFFICIAL BUSINESS
PENALTY FOR PRIVATE USE \$300

POSTAGE AND FEES PAID
DEPARTMENT OF THE ARMY
DOD 314



TEAR ALONG PERFORATED LINE

COMMANDER
U S ARMY TROOP SUPPORT COMMAND
ATTN: AMSTR-MCTS
4300 GOODFELLOW BOULEVARD
ST. LOUIS, MO 63120-1798

The Metric System and Equivalents

Linear Measure

1 centimeter = 10 millimeters = .39 inch
 1 decimeter = 10 centimeters = 3.94 inches
 1 meter = 10 decimeters = 39.37 inches
 1 dekameter = 10 meters = 32.8 feet
 1 hectometer = 10 dekameters = 328.08 feet
 1 kilometer = 10 hectometers = 3,280.8 feet

Weights

1 centigram = 10 milligrams = .15 grain
 1 decigram = 10 centigrams = 1.54 grains
 1 gram = 10 decigrams = .035 ounce
 1 dekagram = 10 grams = .35 ounce
 1 hectogram = 10 dekagrams = 3.52 ounces
 1 kilogram = 10 hectograms = 2.2 pounds
 1 quintal = 100 kilograms = 220.46 pounds
 1 metric ton = 10 quintals = 1.1 short tons

Liquid Measure

1 centiliter = 10 milliliters = .34 fl. ounce
 1 deciliter = 10 centiliters = 3.38 fl. ounces
 1 liter = 10 deciliters = 33.81 fl. ounces
 1 dekaliter = 10 liters = 2.64 gallons
 1 hectoliter = 10 dekaliters = 26.42 gallons
 1 kiloliter = 10 hectoliters = 264.18 gallons

Square Measure

1 sq. centimeter = 100 sq. millimeters = .155 sq. inch
 1 sq. decimeter = 100 sq. centimeters = 15.5 sq. inches
 1 sq. meter (centare) = 100 sq. decimeters = 10.76 sq. feet
 1 sq. dekameter (are) = 100 sq. meters = 1,076.4 sq. feet
 1 sq. hectometer (hectare) = 100 sq. dekameters = 2.47 acres
 1 sq. kilometer = 100 sq. hectometers = .386 sq. mile

Cubic Measure

1 cu. centimeter = 1000 cu. millimeters = .06 cu. inch
 1 cu. decimeter = 1000 cu. centimeters = 61.02 cu. inches
 1 cu. meter = 1000 cu. decimeters = 35.31 cu. feet

Approximate Conversion Factors

| To change | To | Multiply by | To change | To | Multiply by |
|---------------|--------------------|-------------|--------------------|---------------|-------------|
| inches | centimeters | 2.540 | ounce-inches | newton-meters | .007062 |
| feet | meters | .305 | centimeters | inches | .394 |
| yards | meters | .914 | meters | feet | 3.280 |
| miles | kilometers | 1.609 | meters | yards | 1.094 |
| square inches | square centimeters | 6.451 | kilometers | miles | .621 |
| square feet | square meters | .093 | square centimeters | square inches | .155 |
| square yards | square meters | .836 | square meters | square feet | 10.764 |
| square miles | square kilometers | 2.590 | square meters | square yards | 1.196 |
| acres | square hectometers | .405 | square kilometers | square miles | .386 |
| cubic feet | cubic meters | .028 | square hectometers | acres | 2.471 |
| cubic yards | cubic meters | .765 | cubic meters | cubic feet | 35.315 |
| fluid ounces | milliliters | 29.573 | cubic meters | cubic yards | 1.308 |
| pints | liters | .473 | milliliters | fluid ounces | .034 |
| quarts | liters | .946 | liters | pints | 2.113 |
| gallons | liters | 3.785 | liters | quarts | 1.057 |
| ounces | grams | 28.349 | liters | gallons | .264 |
| pounds | kilograms | .454 | grams | ounces | .035 |
| short tons | metric tons | .907 | kilograms | pounds | 2.205 |
| pound-feet | newton-meters | 1.356 | metric tons | short tons | 1.102 |
| pound-inches | newton-meters | .11296 | | | |

Temperature (Exact)

°F Fahrenheit temperature 5/9 (after subtracting 32) Celsius temperature °C

